

# Ecology & Conservation Environmental Biology

Undergraduate Prospectus



# Contents

1	Welcome To Lancaster
2	Studying at the Lancaster Environment Centre (LEC)
4	Be Taught By The Best
5	New Laboratories For LEC
6	<b>Ecology and Conservation</b> (B.Sc. Honours and M.Sci.)
8	<b>Environmental Biology</b> (B.Sc. Honours and M.Sci.)
10	Away From Campus: Our Field Courses
11	Opportunities For Overseas Study
12	What Do Our Graduates Think?
14	Working Towards A Career
15	The Lancaster Award
16	Careers
17	Admissions Information
18	Bursaries & Scholarships
19	University Life In Lancaster
20	Lancaster And The Local Area
21	Visiting Us
22	Open To All
	Further Information And Contacts (Inside Back Cover)



Lancaster Ecology and Conservation Students

## Welcome To Lancaster

### Why Study Ecology & Conservation and Environmental Biology?

We are all aware of the impacts that humans are having on our planet. The global population has grown to over 7 billion people; climate change continues to drive increases in temperature and the frequency of extreme weather events; agriculture occupies 40% of all ice-free land while 17% of the Earth's soils are degraded; our dependence on fossil fuels is leading us to severely modify or pollute ecosystems; and we face an unprecedented extinction crisis, with many species disappearing from the planet before they have even been recognised by science.

#### If these issues concern you, and you would like to know more, then read on...

Studying Ecology & Conservation or Environmental Biology at Lancaster University, ranked 9th in the UK according to The Complete University Guide 2016 and within the top 1% of universities in the world, provides you with a comprehensive grounding in the key principles that underpin the major ecological and environmental issues of today's world. You will also develop the key skills required to help tackle these issues in your future workplace. The Ecology & Conservation degree addresses the inner workings of nature and how human activity affects them, combining pure and applied ecology with conservation biology. The Environmental Biology degree relates fundamental biological processes to the major environmental challenges of the 21<sup>st</sup> century, including global environmental change, sustainable resource management, food security and pollution.

#### The excellence of the Ecology & Conservation and Environmental Biology degrees offered at Lancaster is built upon:

**Teaching excellence.** We received the highest possible score of 'Full Confidence' in the latest University teaching assessment. Our highly dedicated and experienced staff draw upon their internationally renowned research to provide fresh ideas and a relevant focus to their innovative teaching. All staff are sensitive to the diversity of students' skills, experience and approaches to learning.

**An emphasis on practical study.** Around 50% of the contact time on our degrees is used for practical sessions both in the field and in the laboratory. We also offer an extensive programme of residential field courses around the world in each year of study.

**Our location.** Lancaster is the perfect place to study ecological and environmental processes, with the Lake District and Yorkshire Dales National Parks located half an hour's drive away and several Areas of Outstanding National Beauty closer still. This provides amazing opportunities for us to take students to some of the most diverse and scenic field sites in the UK.

**Our links to business and industry.** The co-location of the Enterprise and Business Partnership Centre and the Centre for Ecology and Hydrology within Lancaster Environment Centre provides excellent opportunities for vocational experiences during your degree. For example, many students work with external organisations for their dissertation project or as an intern, thereby increasing their employability.

**Our Study Abroad and M.Sci. options.** We offer exciting exchange programmes that allow you to spend the second year of your degree in a partner university in North America or Australia. Our four year M.Sci. programmes offer you the opportunity to continue your studies to Masters level within a single integrated degree scheme and include an extended research project.

# Studying at the Lancaster Environment Centre (LEC)



## The LEC Concept

The Lancaster Environment Centre (LEC) was formed as part of an £8.25 million project by placing Biological Sciences, Environmental Science and Geography under the same operational umbrella. Ecology & Conservation and Environmental Biology sit at the heart of these disciplines, allowing a truly integrative learning experience that links the natural and social sciences.

## Within LEC, we aim to...

...inspire and encourage you to develop both personally and intellectually.

...develop a thriving academic community of which our students are key members. The open and friendly atmosphere allows high levels of interaction between students, academic staff, researchers and support staff.

## Studying in an interdisciplinary Environment Centre

LEC provides an ideal academic environment in which to study Ecology & Conservation and Environmental Biology. The interdisciplinary nature of LEC provides an extremely wide range of modules to choose from throughout your degree, allowing you to specialise in everything from organismal ecology to the interactions between ecosystems and society.



# Subject Specific And Generic Skills



In addition to teaching these academic disciplines, our programmes have a strong emphasis on providing students with a range of subject-specific and generic skills that prepare students for fulfilling professional careers in ecology, conservation, environmental biology or elsewhere.





## Be Taught By The Best:

**Research excellence** in the Lancaster Environment Centre (LEC)

LEC is one of the largest collections of environmental researchers in Europe. Its mission is to address today's key environmental challenges, focusing on research with real impact and that links directly with end-users. This research spans several disciplines including ecology, conservation biology and environmental biology, and our staff are leading the international research agenda in several key areas, including the impacts of climate change on biodiversity and conservation and the development of sustainable crop production systems.



We have expertise in a diverse range of topics from intracellular signalling in plants to behavioural ecology in birds and tropical forest biodiversity. Our research projects span a large variety of geographic areas and biomes, including the moorlands and woodlands of the UK, the savannahs of Africa and the Amazonian rainforest. These and other projects receive funding from the UK Research Councils, DEFRA, the European Union, DFID and various other national and international partners.



## New Laboratories For LEC

**Opened in Spring 2015**

A brand new £4.4 million, 680 m<sup>2</sup> building houses two laboratories with bench space for 216 students, and is shared between the Lancaster Environment Centre and the Biological Life Sciences department at Lancaster University.

The flexible design means that up to four classes can be taught at one time in the two laboratories, with up to 12 students clustered around double benches, having access to monitor screens and speakers which are controlled from four teaching stations.

Ancillary facilities include cold store rooms, a plant growth room, preparation rooms, a muffle furnace room, 12 fume cupboards, storage space and office space for technical staff. Lockers are provided in a circulation area so students can follow best practice and leave their coats and bags outside the labs.

On the outside there is a decorative 'Living Wall' covered in vegetation. A series of individual growing units spread across the surface of the wall contain plants which are fed through a pumping system that distributes water and nutrients to the vegetation.





# Ecology and Conservation

**(B.Sc. Honours and M.Sci.)** degree programme

Lancaster University is a national leader in both the science of the environment and its application in conservation, landscape management and environmental policy. Our unique location on the doorstep of the Forest of Bowland, Morecambe Bay and the Lake District and Yorkshire Dales National Parks provides the perfect setting in which to study ecology, and there are an exceptional number and variety of sites of high conservation interest within this region.

Our Ecology & Conservation degrees are aimed at students with a broad interest in how organisms interact with each other and with their environment, and in how these processes are affected by human activities. We will provide you with a thorough grounding in ecological theory and practice and you will also gain a deep understanding of how these principles relate to the conservation of species and the ecosystems in which they live.

The diverse and flexible programme allows you to select specialist topics to match your interests, focusing on ecology, conservation or a mixture of the two. Because

of the breadth of modules available in the Lancaster Environment Centre (LEC), you can also expand your knowledge by selecting optional modules in earth science and geography, many of which are an excellent complement to the study of ecology and conservation.

The programme is taught by staff in LEC as well as external lecturers from organisations such as the Environment Agency, Natural England, RSPB and the Centre for Ecology and Hydrology. Lectures, tutorials, practicals and workshops take place in our state-of-the-art teaching facilities and are complemented by field excursions and residential field courses in the UK, Spain and Brazil. Modules are assessed through a combination of coursework, end-of-module tests and summer examinations.

The degree begins with an integrated first year which combines introductory ecology and conservation biology (including a field course in southern Spain) with modules in evolutionary and environmental biology. You will also take broader modules introducing key environmental issues and have the option to take



Brazilian Amazon

modules in Environmental Science, Geography or from subjects outside of LEC. In the second year, there are compulsory ecology, conservation biology and practical skills modules along with a selection of relevant optional modules such as Evolution and Environmental Physiology. Students on our Study Abroad programme spend their second year taking similar modules at a University in North America or Australia. In third year, you can choose from a broad range of optional modules such as Animal Behaviour, Conservation in Practice and Frontiers in Ecology and Evolution; you will also carry out an independent research project.

All of our research projects are supervised by academic staff from LEC, but students have the option of applying to do their project while on work placement with a commercial partner or external organisation in the ecology or conservation sectors. This opportunity is developed more strongly in our M.Sci. degree, in which the fourth year includes an extended project with an external partner alongside Masters level modules. There are also opportunities to carry out third year projects at a European University via the Erasmus scheme.

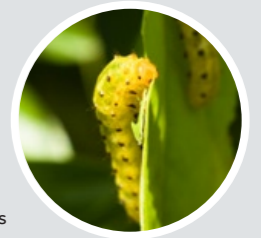
**Course Options:** Students may choose to go to North America or Australasia for the second year of the B.Sc. course.



## Degree structure:

### Year 1

- Core modules**
- Evolutionary Biology
  - Zoology
  - Aquatic Ecology
  - Global Change Biology
  - Biodiversity and Conservation
  - Global Environmental Challenges
  - Interdisciplinary Skills
  - Spanish Field Course



### Optional modules

Up to five further optional modules in any subject

### Year 2

- Core modules**
- Populations to Ecosystems
  - Principles of Biodiversity Conservation
  - Data Collection and Analysis
  - Research Design and Delivery
  - Field Biology
- Optional modules: 2 modules from**
- Genetics
  - Introduction to Eco-Innovation
  - Interacting Landscapes: Biogeography and Geomorphology
  - Evolution
  - Environmental Physiology
  - Soil Science

### Year 3

- Core modules**
- Research project
- Optional modules: seven modules from**
- Environmental Remote Sensing and Image Processing
  - Quaternary Environmental Change
  - Environment, Politics and Society in Amazonia
  - Lakes, Rivers and Estuaries
  - Conservation and Sustainable Development in the Brazilian Amazon
  - Conservation in Practice
  - Issues in Conservation Biology
  - Scotland Field Course
  - Frontiers in Ecology and Evolution
  - Animal Behaviour
  - Global Change Biology: Challenges and Solutions
  - Environmental Plant Biology
  - Ecophysiology of Host-pest Interactions
  - Sustainable Agriculture
  - Water Resources Management
  - Climate and Society

### Year 4

- Core modules**
- Extended research project
- Optional modules**
- Four Masters level modules selected from a wide range available within LEC



# Environmental Biology

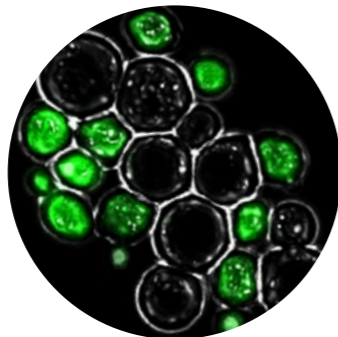
**(B.Sc. Honours and M.Sci.)** degree programme

The mission of the Lancaster Environment Centre is to address the major environmental challenges of the 21<sup>st</sup> century, especially those related to global environmental change, sustainable resource management, food security, pollution and biodiversity loss. Our Environmental Biology degrees are aimed at students of biology who want to relate fundamental biological processes to these real life issues. We will provide you with a solid grounding in key biological theory and practice and focus on how understanding these principles can shape our strategies for tackling environmental problems.

The diverse and flexible programme allows you to select specialist topics to match your interests, with the range of possible subjects including ecology, genetics, climate change, agriculture and conservation. Because of the breadth of modules available in the Lancaster Environment Centre (LEC), you can also expand your knowledge by selecting optional modules in earth science and geography, many of which are an excellent complement to the study of environmental biology.

The programme is taught by staff in LEC as well as external lecturers from organisations such as the Environment Agency, Natural England, RSPB and the Centre for Ecology and Hydrology. Lectures, tutorials, practicals and workshops take place in our state-of-the-art teaching facilities and are complemented by field excursions and residential field courses in the UK, Spain and Brazil. Modules are assessed through a combination of coursework, end-of-module tests and summer examinations.

The degree begins with an integrated first year which combines introductory environmental biology with modules in ecology and conservation biology. You will also take broader modules introducing key environmental issues and have the option to take modules in Environmental Science, Geography or from subjects outside of LEC. In the second year, there are compulsory modules in environmental physiology and practical skills along with a selection of relevant optional modules such as Cell Biology and Genetics. Students on our Study Abroad programme spend their



second year taking similar modules at a University in North America or Australia. In third year, you will take core modules in Global Change Biology and Sustainable Agriculture and can choose from a broad range of optional modules such as Environment, Politics and Society in Amazonia and Environmental Remote Sensing and Image Processing; you will also carry out an independent research project.

All of our research projects are supervised by academic staff from LEC, but students have the option of applying to do their project while on work placement with a commercial partner or external organisation in the environmental biology sector. Students on the M.Sci. degree do an extended project alongside Masters level modules. There are also opportunities to carry out third year projects at a European University via the Erasmus scheme.

**Course Options:** Students may choose to go to North America or Australasia for the second year of this course.



## Degree structure:

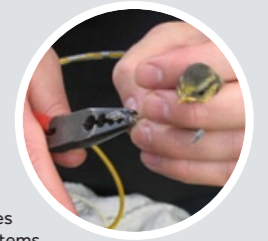
### Year 1

#### Core modules

Evolutionary Biology  
Zoology  
Aquatic Ecology  
Global Change Biology  
Biodiversity and Conservation  
Global Environmental Challenges  
Environmental Processes & Systems

#### Optional modules: up to six further optional modules in any subject including one from

Spanish Field Course  
Developmental Biology  
Marine and Estuarine Biology



### Year 2

#### Core modules

Data Collection and Analysis  
Research Design and Delivery  
Environmental Physiology

#### Optional modules: four modules from

Cell Biology  
Medical Microbiology  
Genetics  
Populations to Ecosystems  
Principles of Biodiversity Conservation  
Evolution  
Field Biology

### Year 3

#### Core modules

Research project  
Global Change Biology: Challenges and Solutions  
Sustainable Agriculture

#### Optional modules: five modules from

Cell Signalling 1  
Cell Signalling, Transport and Disease  
Genetics  
Molecular and Biochemical Parasitology  
Environmental Pathogens  
Environmental Remote Sensing and Image Processing  
Environment, Politics and Society in Amazonia  
Food and Agriculture in the 21<sup>st</sup> Century  
Conservation in Practice  
Issues in Conservation Biology  
Scotland Field Course  
Frontiers in Ecology and Evolution  
Animal Behaviour  
Environmental Plant Biology  
Ecophysiology of Host-pest Interactions  
Climate and Society

### Year 4

#### Core modules

Extended research project  
Biological Effects of Air Pollution and Climate Change

#### Optional modules:

Three Masters level modules selected from a wide range available within LEC

## Away From Campus: **Our Field Courses**



Lancaster Students in the Brazilian Amazon

### **Upland Ecology, Scotland**

The mountains and upland areas of Scotland provide us with an opportunity to visit some of the few natural habitats left in the UK. We base ourselves at Kindrogan field centre, near Pitlochry, and visit sites of interest each day, including mountain plateaus, Caledonian pine forest, and other areas of importance to a range of plant and animal species. The focus is on understanding the landscape, the place of key species within it, and the conservation and management issues of upland regions. As well as visiting sites of great scenic beauty, we also get to know the fantastic flora of the region and usually see a broad range of animal species such as red deer, osprey, mountain hare, hen harrier and golden eagle.



### **Tropical Biology Field Course**

As a consequence of our expansion of organismal biology teaching, we are currently developing a new tropical biology field course in Africa or South East Asia, which will be available for new students in year 3 of their degree. The course will have either a terrestrial and/or aquatic focus depending upon final

arrangements and staffing. Locations currently under consideration include Kenya, the Danum Valley in Borneo, or Indian Ocean coral reefs.

### **Biodiversity and sustainable development in... ...The Brazilian Amazon**

The Amazon is a fascinating place to explore the conservation and development challenges facing tropical forests. We will be based in the Jari region in the north-eastern Brazilian Amazon, and will visit many places of interest. These include beautiful Amazonian forests and their wildlife, as well as rural communities and large-scale sustainable logging operations. This is a unique opportunity to work with Amazon experts from the Lancaster Environment Centre and understand the challenges of pursuing biodiversity conservation whilst also reducing poverty. We will learn how to monitor biodiversity and forest carbon stocks and assess rural livelihoods, including farming and Brazil nut collection.

### **Doñana National Park, Spain**

We visit Doñana National Park in the southwest of Spain, one of the most important biodiversity hotspots in Europe. The area is home to over 1500 species of plants, over 400 species of birds and 50 species of terrestrial mammals including the Iberian Lynx, the most endangered of the world's cats. The course explores the diversity of habitat and organisms living in the area and the actions that can be taken to promote the conservation of biodiversity. Students gain practical experience of identification, critical observation and accurate recording of plants, invertebrates and birds. A guided visit to the National Park provides students with an understanding of the role of National Parks in conservation.

## **Opportunities** For Overseas Study



### **Study Abroad**

Our three-year B.Sc. programmes are available with a study abroad option. The year abroad is not an add-on to your degree; it is fully integrated so that you can complete your B.Sc. in just three years. Students on the study abroad scheme spend their first year in Lancaster, their second at a University overseas, and then return to Lancaster for the third and final year of the degree. Destinations for your year abroad include the USA, Canada and Australia.

More than 80% of our exchange students get an upper second or first class degree so, in addition to broadening your academic horizons, developing your personal and social skills and providing you with an understanding of another culture and society, the experience is also likely to enhance your job prospects.

### **Where can you go?**

The majority of our partner Universities are in North America, located across the United States and Canada. You could spend your second year in Florida, Colorado, Texas, Miami, Maine, Illinois, Oregon, Michigan, Iowa, North Carolina, or Purdue, Indiana. Current partners in Canada are the University of Alberta (Edmonton), the University of Calgary and Trent University (Ontario). Alternatively, you also have the opportunity of studying in Australia. Here, we are linked with Griffith University and Queensland University of Technology (both in Brisbane), Macquarie University and Wollongong University (Sydney), Monash University (Melbourne) and Murdoch University (Perth). The choice of destinations and number of places can vary from year-to-year, so we cannot guarantee that you will be able to go to your first choice, but we are sure that wherever you go, it will be an experience to remember.

### **Can I afford it?**

Whilst there are clear financial implications in living abroad for a year (and many students take the opportunity to do other travelling while they are abroad), the study abroad scheme does not cost as much as you might think. There is also some important financial help available in the form of (i) reduced fees to Lancaster University; you will pay just 15% of the usual tuition fee during the year abroad, and there are no fees payable to the overseas institution, (ii) an enhanced student loan, and (iii) a means-tested Government Travel Grant, which usually covers the cost of two return flights plus insurance.

### **Dual offer system**

If you apply for a study abroad course, we will also automatically consider you for the 'standard' degree programme (for which the entry requirements are typically lower) and therefore you do not need to list both courses on your UCAS form. If, at any time during your first year, you decide that you no longer want to study abroad, you can simply switch to the standard degree programme.



# What Do Our Graduates Think?

## Alasdair Grubb

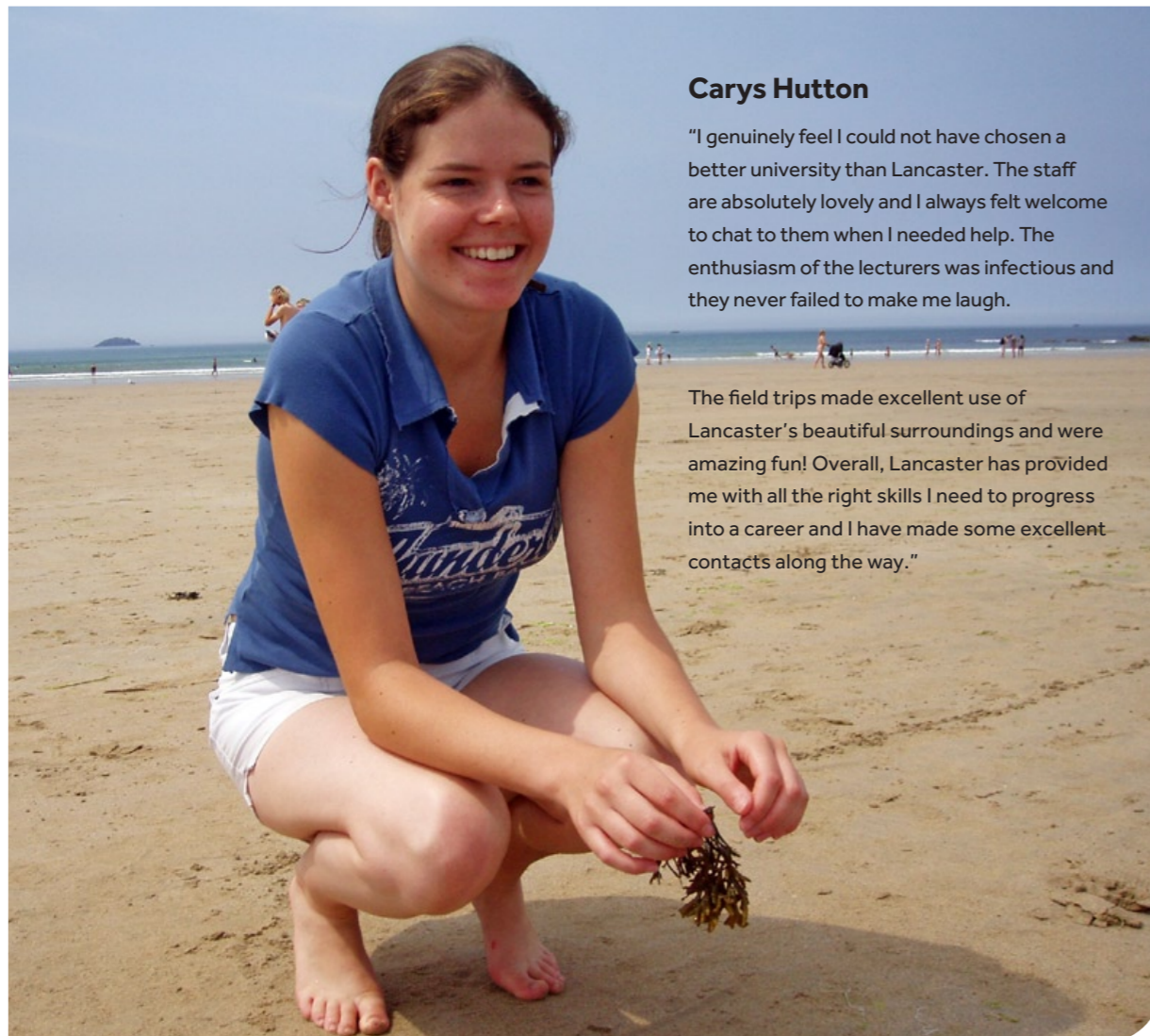


"Lancaster was a brilliant place to study. The lectures gave me sound background knowledge on topical subjects and the practicals expanded upon this knowledge. The best part of the course (for me) were the field trips; they allowed us to get out into the countryside and really get to grips with the problems biodiversity faces. I'm currently working as Assistant Warden at the RSPB Leighton Moss and Morecambe Bay Reserves, partaking in practical conservation on a day to day basis: reed cutting areas for ducks to feed, erecting electric fences to protect avocet nests, coppicing to create rides for nationally scarce butterflies. I love every minute of my work and can't wait to get started every day! This is all thanks to my time at Lancaster and a bit of volunteering."



## Chris Nesbit

"Lancaster's reputation for excellence is well earned! Studying ecology at Lancaster gave me a greater appreciation of general ecological principles before allowing me to expand my interests in behavioural ecology and ecosystem functioning. The staff are friendly, supportive and enthusiastic which made the field trips a lot of fun and doing my dissertation a rewarding experience. The college system allowed me to meet loads of new people - there's always a social or a party to go to. I enjoyed my undergrad' years at Lancaster so much I'm staying on to do a PhD!"



## Carys Hutton

"I genuinely feel I could not have chosen a better university than Lancaster. The staff are absolutely lovely and I always felt welcome to chat to them when I needed help. The enthusiasm of the lecturers was infectious and they never failed to make me laugh.

The field trips made excellent use of Lancaster's beautiful surroundings and were amazing fun! Overall, Lancaster has provided me with all the right skills I need to progress into a career and I have made some excellent contacts along the way."



## Georgina Key

"When I visited Lancaster on an open day I knew that I wanted to come to the university because of the relaxed atmosphere on campus and friendly staff. There is always a lot going on throughout campus and with so much expertise available to you studying here is really exciting. The Lake District is on your doorstep, so the fieldtrips are great and there is also the opportunity to study abroad for a year. I spent my second year in Sydney, Australia, which was fantastic, and I was able to complete my final year with my friends. My degree at Lancaster has really fuelled my interest in how the environment works."

## Working Towards a Career



### Internship opportunities

We recognise that you want a degree that, as well as ensuring your academic excellence, also enhances your employability. All of our degree programmes contain a module which addresses these issues and offers training in CV writing and presentation skills. In addition colleagues from a wide range of industrial settings contribute their perspectives on employment issues and practices, ensuring that you're as well informed and prepared as possible.

Relevant work experience while you are at university is crucial to achieving a good graduate job. An internship will give you the opportunity to apply your academic knowledge in real world situations whilst helping you to develop your transferable skills such as team working, time management, leadership, networking and commercial awareness – and get paid for it! We offer competitive internships in regional businesses across the North-West, both full-time internships during the summer break and part-time opportunities throughout the year, through the Faculty of Science and Technology internship programme and in collaboration with Sector Skills Councils.

**Not only can you gain valuable work experience, but employers frequently offer graduate roles to interns.**

### Gaining real world experience

The location of Lancaster makes it ideal for gaining experience through volunteering. Lancaster University Student Union runs Green Lancaster, providing plenty of opportunities to get dirty at the weekend and gain practical skills. Green Lancaster offers external placements, so students get the chance to gain volunteering experience working in the local community, in partnership with the RSPB, Lancashire Wildlife Trust and other partners. Nature reserves that are just a short journey from Lancaster include Heysham Moss (LWT), Leighton Moss (RSPB), Arnside Knott (Butterfly Conservation), Warton Crag (RSPB, LWT), Gait Barrows (NNR), Morecambe Bay Nature Improvement Area, Ingleborough National Nature Reserve and Colt Park Meadows, the Forest of Bowland and the spectacular limestone pavements at Hutton Roof (National Trust/Natural England). In under an hour you can be in the heart of the Lake District or Yorkshire Dales National Parks.

## The Lancaster Award



### The Lancaster Award

At Lancaster we not only value your academic accomplishments, but also recognise the importance of those activities with which you engage outside your programme of study. The student experience is enhanced by including extra-curricular activities and, with more graduates than ever before and increasing competition for jobs upon leaving University, these are vital to your future prospects. We want to encourage you to make the very most of your University experience and to leave Lancaster as a well-rounded graduate. We have a wealth of opportunities to get involved in with initiatives such as work placements, volunteering, extracurricular courses, societies and sports. The Lancaster Award aims to encourage you to complete such activities, help you to pull them together in one place and then be recognised for your accomplishments. We want you to stand out from the crowd - the Lancaster Award will help you to do this.

### Do your dissertation as a work placement

We offer our students the option of undertaking their final year dissertation as part of a work placement. This is organised using the contacts secured through the Enterprise and Business Partnerships centre and gives

students a fantastic opportunity to undertake a novel research project housed within a company or charity seeking environmental solutions to real problems. Recent projects offered to students have included work in partnership with local Wildlife Trusts, Natural England, the National Trust, Butterfly Conservation, the RSPB, as well as work with local consultancies concerning new land and water management techniques.



For those students who are interested in and committed to a teaching career, we offer a Bioscience Education dissertation project involving a placement at a local secondary school. Students on this placement design, develop and deliver teaching materials to Key Stage 3 and 4 pupils.

# Careers



Lancaster Environment Centre Careers Fair

## Careers

Graduates from the Lancaster Environment Centre have an outstanding employment record. The latest data (from 2012-2014) show that, six months after leaving University, over 90% of students graduating in the biosciences (including Ecology & Conservation and Environmental Biology) were in full-time employment, undertaking further study or combining additional studies with part-time employment.

A degree in Ecology & Conservation or Environmental Biology provides students with all the skills and experience required for employment in these fields. Students will also graduate with a broad range of transferable skills which are valuable for careers related to many aspects of research, business and public service. Examples of the types of employment for which these degree programmes are suited include:

Environmental Consultant, Nature Conservation Officer, Research Scientist, Soil Scientist, Crop Scientist, Higher Education Lecturer, Secondary School Teacher.

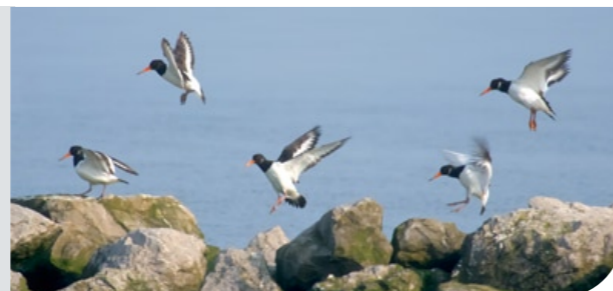
At Lancaster, a great deal of emphasis is placed on developing employability skills throughout our degree programmes. This is achieved by:

- Encouraging all of our students to enrol for the Lancaster Award. This formally recognises and rewards voluntary work, work experience and participation in careers training programmes offered by the Centre for Employability, Enterprise and Careers (CEEC).
- Providing tutorials and workshops on careers planning and preparation as integral parts of each biology degree programme.
- Providing careers drop-in sessions with staff from CEEC every term, plus mentoring events to enable current students to receive practical advice from our former graduates.
- Ensuring students are kept fully informed of new employment opportunities and careers events held both on and off campus, via regular emailed careers bulletins.

16



**Ami Weir** (B.Sc.)  
Past Student  
Recording officer with  
the Wildlife Trust



# Admissions Information



## Typical requirements for entry to our Ecology and Conservation and Environmental Biology programmes:

### BSc (Hons) degrees

- A level grades **ABB**
- Scottish Higher grades **BBBBB**
- International Baccalaureate **32pts**
- BTEC **DDM**

### BSc (Hons) degrees (Study Abroad)

- A levels **AAB**
- Scottish Higher grades **ABBBB**
- International Baccalaureate **35pts**
- BTEC **DDD/DDM**

### MSci (Hons) degrees

- A level grades **AAA**
- Scottish Higher grades **AAABB**
- International Baccalaureate **36pts**
- BTEC **DDD**

**Note:** For all degree programmes, we typically look for a minimum of 2 science subjects at grade **B** from the 3 A-levels studied. We also require GCSE passes in English at grade **C** and Mathematics at grade **B**.

**For information on subject requirements within other qualifications, please do not hesitate to contact us.**

## Applications

Applications for all of our undergraduate degree programmes must be made through the Universities and Colleges Admissions Service (UCAS), using the online service via: [www.ucas.ac.uk](http://www.ucas.ac.uk)

## Degree programme UCAS codes

**BSc Ecology and Conservation** (UCAS code C180)

**BSc Ecology and Conservation Study Abroad** (UCAS code C182)

**MSci Ecology and Conservation Professional Experience** (UCAS code 0X48)

**BSc Environmental Biology** (UCAS code C150)

**BSc Environmental Biology Study Abroad** (UCAS code C151)

**MSci Environmental Biology** (UCAS code C154)

**MSci Environmental Biology Study Abroad** (UCAS code C155)

## Mature and overseas applicants

We welcome applications from mature or overseas students or those offering relevant subjects such as Access Diplomas or other awards. Your application will be considered individually on its merits and in relation to the University's guidance on equivalence to A levels.

17

# Bursaries & Scholarships



*Lancaster University has an extensive programme of financial support and funding for students that consists of:*

## Bursaries for life, living and learning

All students from the UK, with a household income of less than £42,600, will be awarded a **Lancaster Bursary of £1,000** for each year of their studies.

Students from the UK eligible for a bursary package will also be awarded our Academic Scholarship and/or Access Scholarship if they meet the criteria.

For up-to-date details of tuition fees, financial support, further guidance and information, please look at the Lancaster University Undergraduate Fees & Finance web page.

*For 2016 entry, our Excellence Scholarship will form part of the Unconditional Offer Scheme for full time UK applicants with outstanding academic profiles. Further information is available at the Lancaster University Undergraduate Fees & Finance web page.*

*Lancaster University's priority is to support every student to make the most of their life and education. 400 students each year will be entitled to bursaries and/or scholarships to help them with the cost of fees and/or living expenses.*

## Scholarships recognising academic talent

Our **Academic Scholarship** is designed to reward the hard work and natural ability of full-time UK and Islands students applying to study with us regardless of their household income. Students achieving: A\*, A\*, A in their A-level examinations (or equivalent academic qualifications), and who place Lancaster as their firm choice, will be awarded a **£2,000** Lancaster Scholarship during their first year of undergraduate studies.

Our **Access Scholarship** is to support UK students with household incomes of less than £42,600, who achieve excellent A level grades of A\*, A, A, or the equivalent academic qualifications. They will be awarded a **£1,000** Access Scholarship for each year of their studies. In addition, students from household incomes of less than £42,600 who achieve higher entry grades of A\*, A\*, A (or equivalent academic qualifications), will also be awarded our £2,000 Academic Scholarship in their first year of study. Continuation of the Access Scholarship is subject to satisfactory academic progression.

The Lancaster University Undergraduate Fees & Finance web page can be found at: [www.lancaster.ac.uk/study/undergraduate/fees-and-funding](http://www.lancaster.ac.uk/study/undergraduate/fees-and-funding)

# University Life In Lancaster



Lancaster is ranked 9<sup>th</sup> in the UK according to The Complete University Guide for 2016 and is in the top 1% of universities in the world. It offers first class teaching and research; it is friendly and flexible, with a great social life. Personal supervision in departments and the collegiate system combine to provide students with the best possible opportunity to achieve their potential. Staff-student ratios are significantly higher at Lancaster University than the national average and small group teaching is an important feature of our educational approach. The cost of University accommodation (and general living costs) at Lancaster is among the lowest in the country.

The University has 12,000 students from more than 120 countries and over 2,500 staff. All our activities are based on a single campus. The University campus is 3 miles from Lancaster city centre and is like a small town, with its own Health Centre (including doctors' and dentists' surgeries and a pharmacy), shops, banks and a post office as well as restaurants, fast food outlets and bars. The Campus has excellent sporting facilities which include an 8 lane 25 metre indoor swimming pool, badminton, squash and tennis courts, a floodlit outdoor pitch, a sauna and solarium, weight training and fitness rooms.

The social life of the university revolves around 8 undergraduate and 1 postgraduate colleges, each with its own distinct identity. Every student and member of staff belongs to a college, and each student is allocated a personal tutor from his or her college. Each college has its own bar, common rooms and residences. Colleges are run by elected student committees and each college has a programme of social events including Christmas Dinners, shopping trips, visits to the Lake District and various nightclubs in the North West. Inter-college rivalry is reflected through a series of annual sporting events.

All students at Lancaster are automatically members of the Lancaster University Students' Union (LUSU). The Union deals with welfare matters and represents students on University committees. The Union organises entertainment on campus and at its social centre and nightclub, The Sugar House, in the centre of the city. Over 60 clubs and societies are affiliated to LUSU which cater for sporting, leisure, political, outdoor, religious, cultural and educational pursuits. The Union also runs shops on the Bailrigg campus, selling stationery, gifts, non-prescription medication and second-hand books.



## Accommodation

All residences have kitchen facilities for self-catering. Most college accommodation consists of single study bedrooms. All but a few of the rooms have en-suite bathrooms. A modern communications system throughout campus provides a telephone in every student room (including voicemail) with free cross-campus calls along with a connection point for the University's broadband computer network which delivers ultra-fast Internet access. The majority of first year undergraduates have a room on campus and over half of all undergraduates live in University-owned accommodation in Lancaster and the surrounding area.

# Lancaster And The Local Area



## By day...

Lancaster is a friendly, bustling city which has all the amenities of a large city without having lost its charm and character. Much in Lancaster is geared to students' needs as it is very much a university town. You will find all of the major high street retailers plus a number of independent specialist shops catering to the needs of students. The city can be reached in 10 minutes by shuttle buses that run every 5 minutes from the university. A short walk eastward from the University campus finds you in the Forest of Bowland Area of Outstanding Natural Beauty. The central part of Bowland is dominated by heather moorland which covers the wide expanses of sweeping fells. This contrasts with the verdant lowland landscapes around the periphery and the wooded valleys of the rivers Ribble, Hodder and Wyre. This and the easy access to local coastal environments, the National Parks of the Lake District and Yorkshire Dales means Lancaster is within reach of prime fieldwork sites for lovers of beautiful landscapes and wildlife. Outdoor enthusiasts will find a range of superb locations for walking, climbing, yachting and rowing.

## By night...

It may only be a small city, but when it comes to nightlife, Lancaster can hold its own. The Sugarhouse (the student union nightclub) is the place to be every weekend, with a huge dance floor, great drinks offers and free buses back to campus. Alternatively, you can sip on sophisticated cocktails in bars like Mint, Revolution, or The Dalton Rooms, or dance the whole night through in clubs such as Hustle, Elements or The Lounge. For those of you looking for cheap drinks and a cheerful atmosphere, vibrant pubs such as Fibber McGees, The Friary or the city's two (yes, two!) Wetherspoons (known to 'those-in-the-know' as Top and Bottom 'Spoons'), will be your first ports of call. If real ales and live music are more your cup of mead, then Lancaster has an abundance of historic pubs, each one brimming with unique character just waiting to be discovered.

If it's a meal out you're after, you'll find yourself spoilt for choice. Not only do the majority of pubs offer great food at student-friendly prices, but Lancaster plays host to a number of restaurants, cafés and takeaways. Given the student-orientated nature of the city, most offer student discounts, as well as theme nights.

Lovers of theatre and the arts are well catered for too. Professional performances are staged at the Dukes Playhouse, the Nuffield Theatre (on the University campus) and the Grand Theatre.

You can find out more about Lancaster and the local area on the University web site: [www.lancaster.ac.uk/explore](http://www.lancaster.ac.uk/explore)



Market Street, Lancaster

# Visiting Us

## Visiting the University

Lancaster is very well served by road, rail and air networks (see map). Annual Open Days take place in June, July and September of each year for anyone thinking of applying to Lancaster. These are an excellent opportunity for students considering Higher Education entry to visit Lancaster and find out about degree programmes, talk to biology staff and go on a tour of campus. Alternatively, there are regular Campus Tours throughout the year. There are tours of the University and its facilities and you will see student accommodation in a College. If you want to attend an annual Open Day or would like to join a conducted tour, please visit the University's website to book a place or e-mail: [visitus@lancaster.ac.uk](mailto:visitus@lancaster.ac.uk) Telephone enquiries can be made to UK Student Recruitment and Outreach team on: **01524 593724**.

If you would like to visit the University informally, you are welcome to do so at any time. You do not have to advise us of your visit; the campus is like a small town and you are welcome to use the shops, Sports Centre, bars and restaurants and to visit the Library. Please contact the biology Undergraduate Admissions Coordinator for a map of the University campus.

## Visiting us at Lancaster

We run subject-specific Applicant Visit Days for potential Lancaster students. Once you've applied through UCAS you'll be invited to come to one of these days, which are held between November and March. The Applicant Visit days are designed to provide you with detailed information about the degree courses and to allow you to get a taste of being an undergraduate here. You will be able to talk to Admissions and subject tutors, find out about the first-rate teaching facilities at Lancaster, join a conducted tour of the campus and student accommodation, see some of the biology research going on, and learn about the student support networks at the University. Parents are also welcome to come to attend our Applicant Visit Days.

### Approximate Travel Times (By Train)

Lancaster — London	2.5 hours
Lancaster — Liverpool	1.5 hours
Lancaster — Manchester	1 hour

- Main Airport
- Main Ferry Port
- Heliport (Penzance)
- Major Cities
- Lancaster Railway Station
- Major Roads







# Ecology & Conservation and Environmental Biology

