

# Geography

## Undergraduate Prospectus



**Geography** at Lancaster Environment Centre

# Contents

1	Welcome to Lancaster
2	Geography as part of the Lancaster Environment Centre (LEC)
4	Our Geography Degree Programmes
6	Geography Modules in Year 1
8	Geography (B.Sc. Honours/B.A. Honours)
10	Human Geography (B.A. Honours)
12	Physical Geography (B.Sc. Honours)
14	Physical Geography (Study Abroad) with a Year in Australasia (B.Sc. Honours)
15	Geography (with a Year in North America) (B.Sc. Honours/B.A. Honours)
18	Economics and Geography (B.A. Honours)
20	Modern Languages and Geography (B.A. Honours)
21	Four Year Programmes (M.Sci. and M.Arts)
22	Teaching and Learning Geography at Lancaster
23	Careers
24	So What Do Our Graduates Think?
26	Lancaster University Research for Industrial Solutions
27	Welcome from the SLUGS
28	Admissions Information, Tuition Fees & Financial Support
29	Bursaries and Scholarships
30	University Life in Lancaster
31	Lancaster and the Local Area
32	Visiting Us
	Further Information and Contacts (Inside Back Cover)

## Welcome!

*If you were to imagine the ideal location to study Geography, it would be surrounded by National Parks, probably be close to the coast, and have easy links to major cities. Lancaster satisfies all these criteria, and hosts an innovative group of Geographers within one of Europe's strongest Environment Centres. We are very proud of our achievements and warmly welcome students aiming to work with one of the very best academic units in the country. The City of Lancaster is a very special, exciting, and importantly, friendly place to live and work. We aim to replicate these characteristics in our teaching programme. Welcome to Lancaster.*

## Welcome to **Lancaster**



Lancaster Environment Centre Graduates and Staff

### Geography ...

... is distinctive because it links the social and physical sciences, each with their particular knowledges, approaches and skills. This is crucial for addressing the challenges of life today, ranging from globalisation, technological change and environmental issues.

... graduates go into jobs for which the intellectual and practical skills gained in a Geography degree are advantageous. Geographers' careers are many and varied, including jobs in research, environmental consultancy, marketing, government, teaching, and more...

### Geography at Lancaster ...

... will inspire and encourage you to develop both personally and intellectually.

... is a thriving academic community of which our students are key members. The open and friendly atmosphere allows high levels of interaction between students, academic staff, researchers and support staff.

... offers you the chance to work in a purpose-built building which forms part of the Lancaster Environment Centre (LEC).

### Geography Teaching at Lancaster ...

... is 'excellent' and received the highest possible score in the latest official inspection of UK Geography departments. Our strong international research reputation is important in ensuring high quality teaching and provides us with fresh ideas and approaches for our degree programmes.

... offers stimulating, high-quality and innovative teaching that builds on students' diverse learning approaches.

... is award winning, Dr Suzi Ilic has won the Pilkington Prize for teaching, Professor Barbara Maher and Dr Andrew Folkard are past recipients of the prize.

### The Degrees Schemes at Lancaster ...

... are flexible. We are committed to ensuring that each individual chooses the degree programme that most closely matches their interests and allows for change along the way. Whilst some students know early on that they lean towards physical or human geography, others prefer to combine. At the end of the first year, most students continue with their UCAS choice of degree scheme; others change to a different Geography degree scheme or take their minor subject further. With almost 100 second and third year modules to choose from across the Environment Centre choice remains high.

... allow you to gain practical experience of a range of environments through an extensive programme of field courses visiting dynamic cities like New York, Paris and challenging rural environments like northern and southern Spain, Croatia, the Brazilian Amazon and Iceland.

... allow you to take optional modules including 'Communicating Geography' in which you teach geography as a classroom assistant in a local school.

... offer North American and Australasian exchange schemes, an opportunity to master a different educational and cultural environment, and to develop intellectually, personally and socially.

... offers you the opportunity to work with industry and other organisations through placements and taught modules.



"It's a great feeling to guide students to the leading edge of their subject, where things are new, important, dynamic; to feel that excitement of knowledge, discovery, learning."

*Professor Barbara Maher,  
winner Pilkington Prize in Teaching*

## Geography as part of The Lancaster Environment Centre (LEC)



### The LEC Concept

At Lancaster, Geography is at the heart of the Lancaster Environment Centre (LEC). This was formed as part of an £8.25 million project to bring together environmental teaching and research under the same operational umbrella. Being a part of LEC gives Geography students the advantage of being part of the University's largest department, with new enhanced facilities, high specification offices, teaching rooms, laboratories and communal spaces.

### Student Learning in LEC

Geography students in LEC have one of the widest ranges of module choices found anywhere in the UK. For example, as well as traditional physical geography modules our students can also select modules in ecology, climate science and volcanology. Being part of LEC does not mean that all our students are interested in Environmental Geography. Indeed we offer a range of cutting edge social, historical and cultural geography modules taught by leading academics in the field. Geography is a diverse and varied subject – the opportunities afforded through the Lancaster Environment Centre allow you to explore almost every possible corner of the geographical discipline.



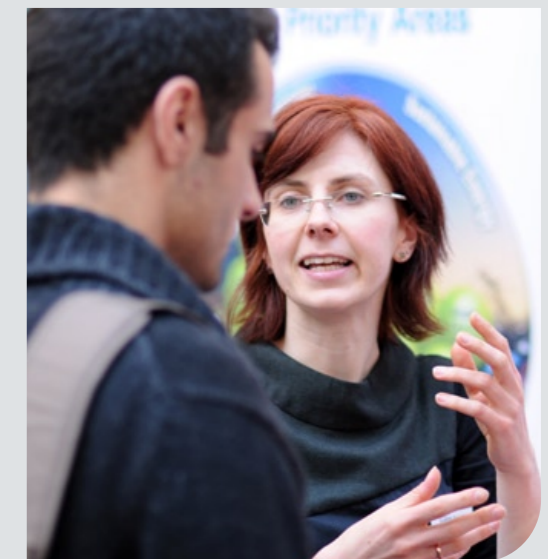
## Learning and Work Placements Through the Enterprise and Business Partnerships



### Enterprise and Business Partnerships

LEC is unique in housing some 20 environmental businesses within our building. This offers students a major opportunity to gain employment experience within their degrees and staff to enhance the economic impact of their research.

As part of their degree, our students can take taught modules and research placements through our in-house Enterprise and Business Centre. These opportunities focus on the development of the academic and practical skills relevant to gaining employment with companies and organisations committed to seeking solutions to real environmental problems (see page 26 for more details).



# Our **Geography Degree** Programmes



## Three Year Programmes

- B.Sc. Geography** (UCAS code: F800)
- B.A. Geography** (UCAS code: L700)
- B.A. Human Geography** (UCAS code: L720)
- B.Sc. Physical Geography** (UCAS code: F840)
- B.Sc. Physical Geography (Study Abroad) with a Year in Australasia** (UCAS code: F847)
- B.Sc. or B.A. Geography (North America)** (UCAS codes, F802/L701)

## Four Year Programmes

- M.Sci. Geography (Professional Experience)** (UCAS code 4R60)
- M.Sci. Geography** (UCAS code 4R61)
- M.Sci. Geography (North America)** (UCAS code 4R62)
- M.Sci. Physical Geography** (UCAS code 4R63)
- M.Sci. Physical Geography (Australasia)** (UCAS code 4R64)
- M.Arts Geography** (UCAS code L702)
- M.Arts Geography (North America)** (UCAS code L703)

## Joint Degrees

- B.A. Economics and Geography** (UCAS code: LL71)
- B.A. French Studies and Geography** (UCAS code: LR71)#
- B.A. German Studies and Geography** (UCAS code: LR72)#
- B.A. Spanish Studies and Geography** (UCAS code: LR74)#

# = four-year degrees with a year abroad.

## Overall Format of Degrees:

### Year 1

Most of our students chose to take the 'Double Part 1' in Geography – i.e. they spend two thirds of their first year taking Geography modules leaving one third available to choose a 'minor' subject in another department. There are over 50 minor subjects to choose from, and we offer personal advice to help you decide. Most students select subjects related to their main degree. Human geographers normally choose arts or social sciences such as sociology, politics, history, psychology, education, marketing or information technology. Physical geographers tend towards science subjects like environmental or biological sciences, mathematics or statistics, or information technology. This distinctive system offers a breadth of education that many employers appreciate.

In Year 1, students can expect 15 contact hours per week, of which approximately nine will be in Geography and the remainder from the minor subject. Each official contact hour should be supplemented by 4–5 hours of personal study time.

### Year 2

In Year 2, you concentrate on Geography, or Human Geography or Physical Geography, if you are on those degree programmes. There are a core of modules that everyone studies covering concepts and techniques in Geography. All students also take a number of



optional modules which let you tailor your degree to your particular interests. One module in another subject outside Geography (either within or outside Lancaster Environment Centre), continued from the first year, can be taken in Year 2, but there are enough courses to allow you to study only Geography. There are a number of optional overseas field courses.

## Final Year

In your final year, your dissertation provides an opportunity for you to perform original geographical research on a topic of your choice, guided by your supervisor. In addition, you choose six modules from a range of areas of Geography (either within or outside Lancaster Environment Centre). These modules are taught by staff with research expertise in the topics covered. One module in another subject outside of Geography, continued from the first or second years, may be taken in the third year, but again you can choose to study only Geography. Students on the 4 year M.Sci./M.Arts programmes choose a number of advanced masters-level modules and complete a second dissertation.

## Other Joint Degrees

With special permission, the flexible Lancaster system allows students and staff to construct non-standard degree programmes tailored to the students' individual interests. Students often follow such a route when they

have taken a subject in Year 1 and wish to continue to study that subject in equal measure alongside Geography in Years 2 and 3. Recently, students have graduated with joint degrees combining Geography with Politics, Management and Organisation, Sociology, Marketing and Criminology. Please note, however, the suitability of combining subjects as joint degrees is carefully assessed by geography staff and is always dependent upon timetabling constraints.





Coastal observation tower at Fleetwood



## Geography Modules in Year 1

Our year 1 modules introduce you to geography at Lancaster. Double Part 1 Geography includes both Human and Physical Geography modules and two Geographical/interdisciplinary skills modules. One other Part 1 subject can then be chosen from another department. Some students choose to take just one Part 1 subject in either Human or Physical Geography together with the single module in Geographical skills. Two other Part 1 subjects are then taken from outside Geography.

All Part 1 students taking geography belong to small tutorial groups which use lecture topics as a vehicle for learning and consolidating study skills. Fieldwork in areas such as the Lake District, the Yorkshire Dales, the Fylde Coast and Manchester, is another important part of all first-year geography courses.



Morecambe Bay at low tide.



### Geographical/Interdisciplinary Skills...

provides an introduction to the skills used by geographers to analyse problems in both human and physical geography. The course focuses on both quantitative and qualitative techniques, computer cartography, geographical information systems (GIS) and remote sensing. All students also complete a group research project that runs throughout the module and allows them to apply the skills they have learned to an appropriate research problem.

6



"I made the decision to take Geography at Lancaster the day after my A-Level results in a spur of the moment kind of action, but I can honestly say that being here studying this course has led to a fantastic three years that I wouldn't dream of changing. Studying both physical and human geography in first year was perfect for creating a foundation of knowledge, helping decide what is interesting to yourself and since then I haven't looked back, indulging myself in topics such as transformative and post-colonial geographies in Africa to political and societal studies in the Amazon to visiting New York firsthand to evaluate modern city inequalities. It's not only the topics, but the people that you meet and the skills that you learn that make this degree what it is, and I'll enter the next stage of my life, although not sure of where I'm heading yet, knowing that this section was well worth the time I invested."

*Jack Watson, BA Geography*



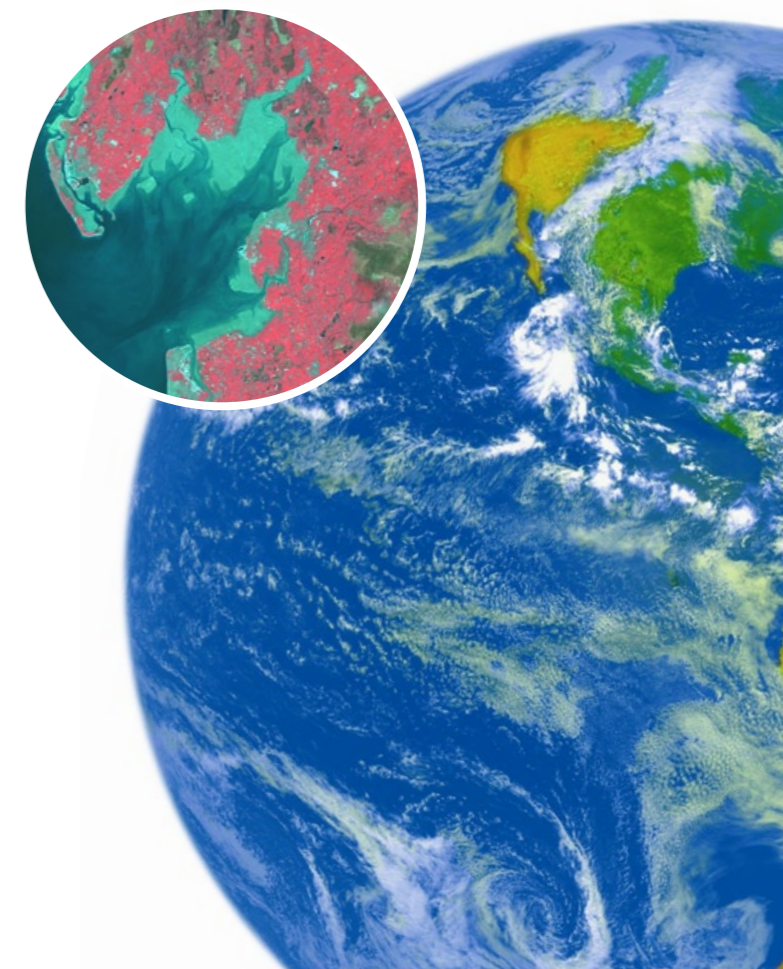
LEC students in the Lake District

### Human Geography: Society and Space...

provides an introduction to contemporary human geography and focuses on the interaction between people and places at a variety of spatial scales. Key themes include urbanisation, globalisation of the World economy, the spatial dimensions of social and economic inequalities, and issues of environmental justice and geopolitics.

### Physical Geography: Environmental Processes and Systems...

introduces degree level physical geography by examining environmental processes and their impacts at a range of spatial scales. Global climate and associated environmental change and the processes which produce distinctive landscapes are all explored using examples drawn from a variety of environments. Key themes span the disciplinary boundaries of geography, biology and environmental science and address environmental issues in the 21<sup>st</sup> century.



**Geography (B.Sc. Honours) degree programme (UCAS Code: F800)**  
**(B.A. Honours) degree programme (UCAS Code: L700)**



Our geography degree programme lets you explore the full range of human, environmental and physical geography through any of the optional modules we offer, all taught by staff who are actively researching in these areas. A key feature of the degree is that you will be exposed to the unique strengths of geography and its ability to investigate interrelationships across space, between people, and between humans and the environment. Increasingly, this ability to deal with issues that span local to global scales, such as climate change and world trade, is becoming highly valued by employers across the public and private sectors. A range of optional overseas field courses in the second and third years will allow you to experience, at first hand, different societies, environments and cultures.

**Degree structure:**

**Year 1**

Double Part 1 Geography + one other subject.

**Year 2**

**Core modules**

Geographical Skills and Concepts  
 Spatial Analysis and Geographical Information Systems  
 Research Project Skills

**Optional modules**

Enterprise for the Environment  
 Development, Geography and the Majority World  
 Geographies of Nature  
 Earth Surface Processes  
 Interacting Landscapes: Biogeography and Geomorphology  
 Investigating Mediterranean Environments \*  
 Environment and Society  
 Paris: Food and Culture Politics \*  
 Ecosystem Services and Society  
 Communicating Geography  
 Cultural Geography  
 Political Geography  
 And other modules from across LEC

**Year 3**

Dissertation

**Optional modules**

Enterprise for the Environment  
 Africa: Geographies of Transformation  
 Environment, Politics and Society in Amazonia  
 Multispecies Geographies  
 Urban Infrastructure in a Changing World  
 Cities and Globalization  
 Geographies of Health  
 Glacier/Landscape Interactions: Iceland \*  
 Food and Agriculture in the 21<sup>st</sup> Century  
 Amazon Field course\*  
 New York: Inequality and the City \*  
 Geomorphology of Northern Spain \*  
 Glacial Systems  
 Holocene Environmental Change  
 Recent Change in Aquatic Environments  
 Rivers, Lakes and Estuaries  
 Coastal Processes  
 Water and Environmental Management in a Mediterranean context \*  
 Integrated Water Management  
 Geographical Information Systems: Principles and Practice  
 Environmental Remote Sensing and Image Processing  
 Quaternary Environmental Change  
 Environmental Magnetism  
 And other modules from across LEC

\* = Field courses



**Featured Field Course:**

**New York: Inequality and the City**

In this course, we study the links between cultural, economic, political and social processes and the ways they influence urban landscapes and life in New York City. Students get to experience many of New York's cosmopolitan districts and through independent projects consider the processes that make it such a contested yet popular city.

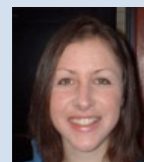


"The Geography field trips offered at Lancaster not only enhance learning but also enable you to meet more people on your course. Experiencing New York first hand was fantastic and I gained insight which you can't get from lectures."

*Iain Hornshaw, BSc Geography*



Lancaster Geography students at the Statue of Liberty



"I have thoroughly enjoyed my last three years studying Geography at Lancaster and will leave having gained good memories, great experiences and increased confidence. The diverse range of modules on offer has allowed me to further my understanding of the physical, social, cultural, economic and political

foundations of our world, with the structure of the course allowing me to shape my degree to my interests. I have found the lecturers and staff are approachable and supportive, which has allowed me to achieve my potential.

*Heather Ponton-Brown, BSc Geography*



## Human Geography

(B.A. Honours) degree programme (UCAS Code: L720)

The Human Geography degree at Lancaster lets you explore in depth the human dimensions of geography. You will learn how to bring critical social science and humanities perspectives to bear on subjects including the Anthropocene, climate change, energy, sustainable agriculture, food security, environmental justice, international development, natural resource management and urbanisation. A wide range of modules in human geography are offered at Lancaster; our staff include experts on human, environmental and political geography, development studies and Anthropology, political ecology and Science and Technology Studies. You will study different research methods, including qualitative research techniques such as action research. There are a number of optional overseas field courses that give students experience of doing research in new environments. Throughout, you will develop the ability to think through a human geography lens, which will help you both as a student and in your future life and career.



### Degree structure:

#### Year 1

Double Part 1 Geography + 1 other subject  
OR  
Part 1 Human Geography + 2 other subjects

#### Year 2

**Core modules**  
Human Geographical Skills and Concepts  
Spatial Analysis and Geographical Information Systems  
Research Project Skills

#### Optional modules

Enterprise for the Environment  
Geographies of Nature  
Environment and Society  
Paris: Food and Culture Politics \*  
Development, Geography and the Majority World  
Ecosystem Services and Society  
Communicating Geography  
Cultural Geography  
Political Geography  
And other modules from across LEC

#### Year 3

Dissertation

#### Optional modules

Enterprise for the Environment  
Geographies of Health  
Food and Agriculture in the 21<sup>st</sup> Century  
Africa: Geographies of Transformation  
Environment, Politics and Society in Amazonia  
Multispecies Geographies  
Urban Infrastructure in a Changing World  
Integrated Water Management  
Geographical Information Systems: Principles and Practice  
New York: Inequality and the City \*  
Water and Environmental Management in a Mediterranean context. \*  
And other modules from across LEC

\* = Field course



## Featured Field Course:

### Brazilian Amazon: Biodiversity Conservation and Sustainable Development

This field course for third year students takes place in a fascinating region of the Brazilian Amazon. The landscapes in Jari include beautiful Amazonian forests and their wildlife, as well as traditional rural communities and large-scale logging operations.

This is a unique opportunity to work with Amazon experts from the Lancaster Environment Centre and understand the challenges of pursuing biodiversity conservation whilst also reducing poverty.

Students will learn how to monitor biodiversity and forest carbon stocks and assess rural livelihoods, including farming and Brazil nut collection.

This week-long course (plus travel time) is available to BA/BSc Geography, Human Geography or Ecology and Conservation students.



Deforestation in the Amazon - photo Alex Lees



## Physical Geography

(B.Sc. Honours) degree programme (UCAS Code: F840)

The Physical Geography degree at Lancaster is an opportunity to explore this subject in depth through an exceptional range of modules within a unique natural landscape. This degree programme enables students to understand how environments have changed in the past, what controls the dynamics of environments in the present and how we can predict changes in the future. All the major components of the 'earth system' are considered - the lithosphere (rocks), hydrosphere (water), biosphere (living things) and the atmosphere (particularly processes associated with climate change). One of the unique things about physical geography at Lancaster is our location in the Environment Centre. This means complementary modules from earth and environmental sciences or ecology and biology programmes can be taken as part of your degree scheme.

Physical geography is a hands-on subject and you will acquire a wide range of laboratory and field skills relevant to your degree and future careers. Optional week-long field courses take place in the second and third years, giving physical geography students experience of solving research problems and using field techniques.



"By focusing on the scientific and physical aspects of the degree course offered at Lancaster, I knew I was playing to my own strengths within the subject. Soon after leaving I started working as a Land Surveyor in my local area. This drew directly off the skills that I had acquired during field courses during my studies."

*Michael Killingbeck, BSc Geography*

### Degree structure:

#### Year 1

Double Part 1 Geography + 1 other subject.  
OR  
Part 1 Physical Geography + 2 other subjects.

#### Year 2

##### Core modules

Physical Geographical Skills and Concepts  
Spatial Analysis and Geographical Information Systems  
Research Project Skills

##### Optional modules

Enterprise for the Environment  
Investigating Mediterranean Environments \*  
Environment and Society  
Geographies of Nature  
Ecosystem Services and Society  
Communicating Geography  
Earth Surface Processes  
Interacting Landscapes: Biogeography and Geomorphology  
And other modules from across LEC

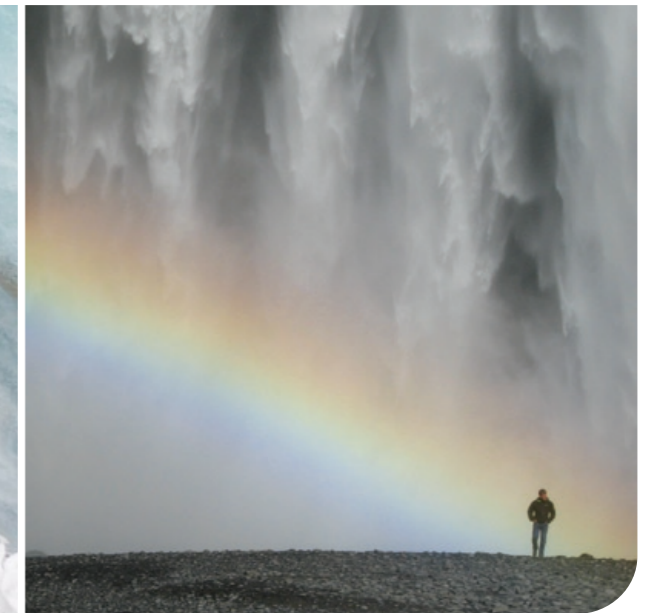
#### Year 3

Dissertation

##### Optional modules

Enterprise for the Environment: Industrial Placement  
Geomorphology of Northern Spain \*  
Glacial Systems  
Glacier/Landscape Interactions: Iceland \*  
Holocene Environmental Change  
Recent Change in Aquatic Environments  
Rivers, Lakes and Estuaries  
Coastal Processes  
Water and Environmental Management in a Mediterranean context \*  
Integrated Water Management  
Geographical Information Systems: Principles and Practice  
Environmental Remote Sensing  
Quaternary Environmental Change  
Environmental Magnetism  
And other modules from across LEC

\* = Optional field courses



## Featured Field Course

Glacier/Landscape Interactions: **Iceland**

This field course, for third year students, takes place in a dynamic and exciting field environment, southern Iceland. Here, glaciers interact with the volcanic environments and processes of this mid-ocean ridge island. The course is designed to stimulate

learning in the physical sciences and provide first hand experience of observing glaciers and glacier-landscape interactions in the field. The week-long course is available to all students taking physical geography modules in their third year of study.





## Physical Geography (Study Abroad) with a Year in Australasia

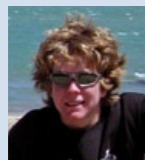
(B.Sc. Honours) degree programme (UCAS Code: F847)

This unique degree provides an exciting year-long opportunity to study Physical Geography at an Australian or New Zealand university. The year abroad is the second of a three-year study programme. Students are guaranteed a place at an Australasian university (subject to academic performance in their first year), therefore competition for places and entry requirements are high (AAA at A level). **Those not accepted for this degree programme will automatically be offered a place on our three-year BSc in Physical Geography (F840).** Students from other degree programmes may be able to opt-in to study abroad at the end of the first term if there are any spare places available.

During your year in Australasia, you can choose from a range of Physical Geography modules for study from July to mid-November and between February and June. These include local field courses. The summer vacation of November to February is available for travel, paid work or fieldwork. The grades you are awarded in Australia or New Zealand will count towards your final degree.

14

Exchange places are currently available in Australasia at the Universities of: Monash (Victoria), South Australia (Adelaide), Macquarie (Sydney), Griffith (Brisbane), and Murdoch (Western Australia), Australian National University (Canberra), Wollongong (New South Wales), and the University of New South Wales, as well as Victoria University of Wellington and University of Waikato in New Zealand.



"I took a place at the Victoria University of Wellington, New Zealand, and it really has lived up to expectations. There is always something going on, whether it is clambering around on Volcanoes, 'tramping' around the temperate rainforests and glaciers of the South Island or watching the All Blacks with a pint. There is the opportunity to take a wide range of Geography and Earth/Environmental Science courses through the year so whether your year will involve the golden beaches and Outback Safaris of Australia or the wild, wet and rugged Middle Earth that is New Zealand it's sure to be fantastic!"

*Darren Axe, BSc Physical Geography (Australasia)*



### Degree structure:

#### Year 1

Double Part 1 Geography + 1 other subject.  
OR  
Part 1 Physical Geography + 2 other subjects.

#### Year 2 (in Australia or New Zealand)

##### Optional modules may include:

Soils and Geomorphology  
Land Degradation and Catchment Management  
Environmental Assessment  
Fluvial Geomorphology  
Environmental Prehistory of Australia  
Environmental Planning  
Global Climates  
Soils and Land Use  
Natural Environments and Human Impacts  
Biogeography  
Quaternary Ecology and Ecosystem Management  
Field Studies in Physical Geography

#### Year 3

Dissertation

##### Optional modules

Geomorphology of Northern Spain \*  
Glacial Systems  
Glacier/Landscape Interactions: Iceland \*  
Holocene Environmental Change  
Recent Change in Aquatic Environments  
Rivers, Lakes and Estuaries  
Coastal Processes  
Water and Environmental Management in a Mediterranean context \*  
Integrated Water Management  
Geographical Information Systems: Principles and Practice  
Environmental Remote Sensing  
Quaternary Environmental Change  
Environmental Magnetism  
And other modules from across LEC

\* = Optional field courses



## Geography (North America)

(B.Sc./B.A. Honours) degree programme (UCAS Code: F802/L701)

These degree schemes present a unique opportunity for you to experience at first hand the diverse physical environments, societies and cultures in the USA or Canada. Competition for places on this scheme, which guarantees a placement in North America, is high and so entry requirements are AAA at A level. **Those not offered a place on this scheme will automatically be offered a place on our three-year BSc or BA Geography schemes (F800 & L700).** Students from other degree programmes may be able to opt-in to study abroad at the end of the first term if there are any spare places available.

The specific modules that you will follow will depend on the particular North American university that you attend, but the institutions with which we have links all offer modules that are complementary to our degree programmes. The grades you are awarded in North America will count towards your final degree. You will have extensive opportunities for fieldwork and travel in North America.

Exchange places are currently available at a number of partner institutions including, in the USA, North Carolina State University, University of Colorado, University of Maine, University of Florida, University of Virginia and Michigan State University. In Canada, University of Alberta, University of Waterloo, University of British Columbia and University of Toronto.



"Geography at Lancaster is a wide ranging and fascinating course, which has provided me with the tools I need to develop my academic career. The diversity of topics covered means that I have been able to explore interests in many areas. The department gave me an unparalleled level of support, which has been invaluable to me in achieving my goals. With their guidance and enthusiastic support I was able to carry out original research on the healthcare system in the Philippines for my undergraduate dissertation. This was a unique experience that helped shape my plans for the future."

*Rachel Winter, BA Geography*

### Degree structure:

#### Year 1

Double Part 1 Geography + one other subject.

#### Year 2 (in North America)

##### Optional modules may include

Soils and Geomorphology  
Environmental Assessment  
Fluvial Geomorphology  
Biogeography  
Ecology  
GIS  
Global climates  
Social and Cultural Geography  
Economic Geography and Globalization  
Development Geographies  
Political Geography  
Rural Geographies  
Research Methods

#### Year 3

Dissertation

##### Optional modules

Enterprise for the Environment  
Africa: Geographies of Transformation  
Environment, Politics and Society in Amazonia  
Geographies of Health and Wellbeing  
Cities and Globalization  
Multispecies Geographies  
Urban Infrastructure in a Changing World  
New York: Inequality and the City \*  
Geomorphology of Northern Spain \*  
Glacial Systems  
Glacier/Landscape Interactions: Iceland \*  
Holocene Environmental Change  
Recent Change in Aquatic Environments  
Rivers, Lakes and Estuaries  
Coastal Processes  
Water and Environmental Management in a Mediterranean context \*  
Integrated Water Management  
Geographical Information Systems: Principles and Practice  
Environmental Remote Sensing  
Quaternary Environmental Change  
Environmental Magnetism  
And other modules from across LEC

\* = Field courses

For further information on opportunities to study abroad, including shorter placements in Europe, please see:

<http://www.lancaster.ac.uk/lec/undergraduate/study-abroad>

15



## Featured Field Course:

### Paris: Food and Culture Politics

This field course takes students to the historical city of Paris to investigate the social, political and environmental impacts of globalizing food. Students engage in a geographic inquiry into the temporal and spatial links between production and consumption and discover how food, culture and politics are interwoven into daily life and that of the dinner table. Through independent and group projects they engage with issues such as fast food vs. slow food, commodity chains of production and consumption, regionalization and cultural protectionism, genetic modification of food and green economies.



16



## Featured Field Course:

### Investigating Mediterranean Environments: Sierra Nevada, Spain

This course visits an area in Spain of steep environmental gradients, ranging from semi-arid conditions along the Mediterranean coast up to the tundra of the peaks of the Sierra Nevada. Working in groups, students gain practical experience in designing, implementing and critically evaluating research projects that investigate diverse problems, such as: sediment transport in highly dynamic river systems, the effects of agricultural terrace abandonment on biodiversity, spatial and temporal variations in microclimates within vegetation canopies, controls on landslide activity, altitudinal variations in soils and vegetation, and the relationships between process and form on alluvial fans.



17



"This was the best field trip I have ever experienced! We learnt so much and developed so many skills that we had accumulated over the last year.

The lecturers were awesome and it was a fantastic opportunity to get to know other students in both a working and social environment in a beautiful region of Spain!"

*Sophie Thickitt, BSC Geography*



## Economics and Geography

(B.A. Honours) degree programme (UCAS Code: LL71)

This degree programme allows you to take advantage of the complementary aspects of Economics and Geography. Economics explores the production and distribution of wealth at the level of the firm and household (micro-economics) as well as at the national and international levels (macro-economics). It addresses important contemporary topics like public policy, banking, global poverty, climate change and regional and urban growth. Geography considers the spatial and environmental impacts of such topics. It analyses such topics as natural resource management, environmental conservation planning, sustainable development, urban neighbourhood dynamics, transport policy and geopolitics. Graduates in Economics and Geography acquire an incisive perspective and analytical skills that are greatly valued by employers in many fields, including corporate planning, economic consultancy, the financial sector and the civil service.

18

### Degree structure:

#### Year 1

Double Part 1 Geography and Economics. OR Part 1 Human Geography modules, Economics and one other subject.

#### Year 2

##### Core Geography modules

Geographical Skills and Concepts  
Spatial Analysis and Geographical Information Systems  
Research Project Skills  
Development, Geography and the Majority World

##### Optional Geography modules

Enterprise for the Environment  
Ecosystem services and Society  
Geographies of Nature  
Environment and Society  
Paris: Food and Culture Politics \*  
Cultural Geography  
Political Geography

##### Economics modules

Microeconomic Principles

Macroeconomic Principles  
Managerial Economics  
Business and the Macroeconomy

#### Year 3

Project

##### Optional Geography modules

Enterprise for the Environment  
Africa: Geographies of Transformation  
Geographies of Health  
Food and Agriculture in the 21<sup>st</sup> Century  
Environment, Politics and Society in Amazonia  
Labour in a Globalising Economy  
Multispecies Geographies  
Urban Infrastructure in a Changing World  
Water and Environmental Management in a Mediterranean context. \*  
Integrated Water Management  
Geographical Information Systems: Principles and Practice  
New York: Inequality and the City \*

\* = Field courses

##### Optional Economics modules

Mathematical Economics  
Econometric Models, Techniques and Applications  
Economics of the European Union  
Human Resource Economics  
Business Enterprise in Modern Britain  
Economics of Developing Countries  
Emerging Economies  
Monetary Economics  
International Money and Finance  
Urban and Regional Economics  
International Trade and Commercial Policy  
International Business  
Industrial Economics  
Economics of Competitive Strategy  
Economics of Advertising

"Geography and Economics is a perfect complementary combination to study. I chose Lancaster University because of its reputation and I have not been disappointed. The course options are varied, challenging and have allowed me to study for a unique degree with excellent career prospects."



Emily Pile, BA Economics and Geography



## Featured field course:

### Water and Environmental Management in a Mediterranean Context

This field course tackles the challenges of managing the environment and especially water resources in the Istrian Peninsula at the northern end of the Adriatic Sea. Here, the environment is strongly governed by its position as a transitional zone between humid temperate and desert climates, making it particularly sensitive to global climate changes. This field course is available to students on all of our degree programmes.



19



# Modern Languages and Geography

(B.A. Honours) degree programmes



Image courtesy of vispix.com

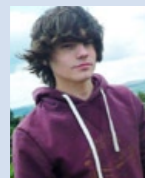
**French Studies and Geography** (UCAS code: LR71)

**German Studies and Geography** (UCAS code: LR72)

**Spanish Studies and Geography** (UCAS code: LR74)

Lancaster University has pioneered a distinctive 'area studies' approach to European language degree programmes that offers an exciting and intellectually challenging combination of the study of languages, cultures and societies. This approach is highly complementary to the various strands of social, political, economic and cultural geography which deal with issues such as social justice, exclusion, gender norms, multi-culturalism, poverty and crime, the EU and the nation state and global geopolitics. Year 3 of this 4-year degree programme is spent in a country where people speak the language you are studying. Activities may include following modules at a university or business school, or teaching English in a secondary school. The work done during your year abroad is assessed and contributes towards your degree. By studying modern languages and Geography you will acquire a unique combination of knowledge, skills and experience that is highly attractive to employers across a range of sectors.

20



"Studying Modern Languages and Geography at Lancaster University afforded me opportunities which reached far beyond those of other courses. Throughout my degree at Lancaster I was able to not only travel, but live in a variety of countries which enriched my understanding of the social and cultural concepts which are passionately taught by Lancaster University staff."

All members of the department were incredibly helpful throughout my time at Lancaster University and offered me support throughout my 3<sup>rd</sup> year whilst abroad; studying cultural change in Spain. This opportunity allowed me not only to enrich my academic understanding of the world, but also provided me with skills that many employers now look for within the European and global markets."

*Dominic Crowley, BA Modern Languages and Geography*

## Degree structure:

### Year 1

Double Part 1 Geography and the language.  
OR  
Part 1 Physical or Human Geography, the language and one other subject.

### Year 2

#### Core Geography modules

Geographical Skills and Concepts  
Spatial Analysis and Geographical Information Systems  
Research Project Skills

#### Optional Geography modules

Enterprise for the Environment  
Development, Geography and the Majority World  
Geographies of Nature  
Cultural Geography  
Paris: Food and Culture Politics \*  
Political Geography  
Earth Surface Processes  
Interacting Landscapes: Biogeography and Geomorphology  
Environment and Society  
Ecosystem Services and Society  
Glacier/Landscape Interactions: Iceland \*

#### Four modules in Modern Languages

### Year 3

Year abroad

### Year 4

Project

#### Optional Geography modules

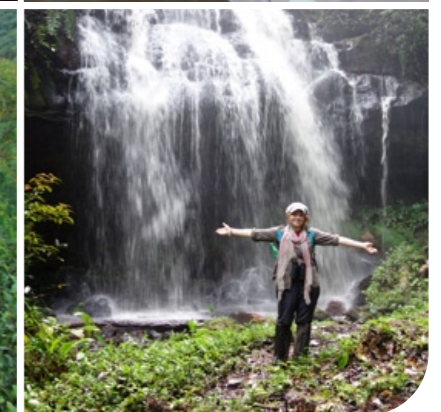
Enterprise for the Environment  
Africa: Geographies of Transformation  
Environment, Politics and Society in Amazonia  
Labour in a Globalising Economy  
Multispecies Geographies  
Urban Infrastructure in a Changing World  
Geographies of Health  
Food and Agriculture in the 21<sup>st</sup> Century  
New York: Inequality and the City \*  
Geomorphology of Northern Spain \*  
Amazon Field Course \*  
Glacial Systems  
Glacier/Landscape Interactions: Iceland \*  
Holocene Environmental Change  
Recent Change in Aquatic Environments  
Coastal Processes  
Water and Environmental Management in a Mediterranean context \*  
Approaches to Environmental Management  
Integrated Water Management  
Geographical Information Systems: Principles and Practice  
Environmental Remote Sensing  
Quaternary Environmental Change  
Rivers, Lakes and Estuaries  
Environmental Magnetism

#### Four modules in Modern Languages

\* = Field courses

# Four Year Programmes

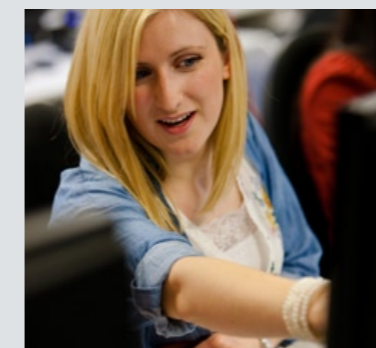
(M.Sci. and M.Arts)



These programmes extend the existing 3-year B.Sc. and B.A. Geography degree programmes by one year leading to an M.Sci. or M.Arts qualification. The extra year of study and subsequent qualification helps you stand out from the crowd in the selection process for graduate posts. The main advantages of the extra year include advanced level experience, knowledge and skills gained from studying master's level modules and the enhanced experience of formulating, justifying, designing, executing and reporting a 4<sup>th</sup> year dissertation which contributes significantly to your final degree. Students on the M.Arts programmes are able to choose master's level modules also from other departments considered cognate to Human Geography including Sociology, Politics and Law.

21

Students on the study abroad variants of the M.Sci. and M.Arts programmes spend the second year of their studies in North America or Australasia. Students on the M.Sci. (Professional Experience) are guaranteed an internship of up to 3 months during their fourth year in a relevant industry, public sector or charitable organisation.



## Four Year Programmes

**M.Sci. Geography (Professional Experience)** (UCAS code 4R60)

**M.Sci. Geography** (UCAS code 4R61)

**M.Sci. Geography (North America)** (UCAS code 4R62)

**M.Sci. Physical Geography** (UCAS code 4R63)

**M.Sci. Physical Geography (Australasia)** (UCAS code 4R64)

**M.Arts Geography** (UCAS code L702)

**M.Arts Geography (North America)** (UCAS code L703)

## Teaching and Learning Geography at Lancaster



How does geography at Lancaster University compare with the subject at school? Is it much the same but a bit harder? The answer is "no, it's really quite different." Being taught at school and learning at university is different. At school, much of the critical input to your education came from your geography teacher and a few textbooks. Here at Lancaster, the lecturer is a guide to the subject, describing its layout and giving you a framework for you to 'flesh out'. That 'fleshing out' comes from the reading you do. The phrase "reading for a degree" describes it exactly. Also, what you read at university is different; it is less dogmatic (in the sense of telling you the right answer, what to think and how to see issues). It is more concerned with arguments, disputes and multiple ways of viewing the world. Geography at Lancaster University is about learning to handle uncertainty and debate, and contributing your own arguments. We use a wider range of teaching and assessment methods than many other subjects or universities, including: lectures, tutorials, seminars, practical classes, fieldwork and dissertations.

22

### Postgraduate study in Geography at Lancaster

After your first degree, why not continue with more specialised studies in in Lancaster Environment Centre? Masters degrees include MA/MSc Environment and Development, MA/MSc Environment, Culture and Society, MSc Resource and Environmental Management. Those keen to pursue innovative research can do a Ph.D. within one of our high profile research groups.

### Our teaching staff and their areas of expertise:

- Professor Philip Barker:** Environmental Change: palaeolimnology and palaeoclimatology
- Dr. Giovanni Bettini:** Global climate politics and environmental security: climate induced migration
- Dr. Alan Blackburn:** Remote sensing for study of environmental change
- Dr. John Childs:** Political ecology of natural resource extraction. Sub-Saharan Africa
- Professor Nigel Clark:** Cultural geography: ethics and politics associated with climate change, biodiversity loss and natural disasters
- Dr. Rebecca Ellis:** Social anthropology, science studies and cultural geography: contemporary innovation in taxonomic and biodiversity sciences
- Dr. Andrew Folkard:** Aquatic processes: interaction between aquatic ecology and physical processes
- Dr. James Fraser:** Anthropology, geography: agro-ecological sustainability in tropical Latin America and Africa
- Dr. Mark Hounslow:** Chronology of sediments and archaeological materials using magnetic techniques
- Dr. Suzana Ilić:** Coastal processes and study of coastal hydrodynamics
- Professor Barbara Maher:** Environmental magnetism and its use for studying climate change and environmental pollution
- Dr. Nils Markusson:** Science & technology studies: involvement of people in technology development in relation to environmental problems
- Dr. Ben Neimark:** Political economy of natural resource extraction, international development and bio-prospecting
- Dr. Luke Parry:** Geography & ecology: ecosystem services. Amazonian natural and social ecologies
- Dr. Manoj Roy:** Architect, urban and spatial planner: urban poverty analysis, climate change adaptation
- Dr. Saskia Vermeylen:** Indigenous knowledge, law & society, resource commodification, Africa
- Professor Gordon Walker:** Environmental risk and environmental justice. Sustainable and community energy projects
- Dr. Nigel Watson:** Socio-economic aspects of natural resources and environmental management. Water and river basin management
- Dr. Rebecca Whittle:** Social aspects of sustainable agriculture and food security
- Dr. Duncan Whyatt:** Geographical Information Systems (GIS) to study air pollution and impact on human health
- Dr. Peter Wynn:** Glacial processes and use of stalactites to study past environments

## Careers



Lancaster Environment Centre Careers Fair

### Careers Preparation and Prospects

A degree in Geography provides students with a very wide range of transferable skills which are valuable for professional careers related to many aspects of the environment, business and public service. Examples of employment entered into by some of our recent graduates include:

- **Technical Consultant**, Ordnance Survey
- **Intelligent Transport Systems Consultant**, Atkins Global
- **Teacher**, Chatteris, Hong Kong
- **Recycling Officer**, South Cambridgeshire District Council
- **Waste Water Management**, Severn Trent Water

Geography graduates from Lancaster have an excellent employment record. Our most recent data show that, six months after leaving university, 80-85% of our Geography graduates were either in full-time employment, undertaking further study, or combining additional studies with part-time employment. Our recent graduates are employed by a diverse range of organisations, including the **Environment Agency** and **Scottish Environmental Protection Agency**, **Price Waterhouse Coopers**, **Deloitte**, **HSBC**, **Balfour Beatty Construction**, **Sainsbury's**, **the NHS** and **HM Revenue and Customs**.

At Lancaster, a great deal of emphasis is placed on developing employability skills throughout the

Geography degree programme. This is achieved by:

- Encouraging all of our students to enrol for the Lancaster Award. This formally recognises and rewards voluntary work, work experience and participation in careers training programmes offered by the Centre for Employability, Enterprise and Careers (CEEC).
- Providing tutorials and workshops on careers planning and preparation as integral parts of each Geography degree programme.
- Enabling students to complete a module on 'Enterprise and the Environment' which provides additional skills and experience necessary to gain employment in the environment sector.
- Providing careers drop-in sessions with staff from CEEC every term, plus mentoring events to enable current students to receive practical advice from our former graduates.
- Giving students who are interested in a teaching career the option of taking part in a programme that enables them to teach Geography in a local school for one afternoon per week for a whole term.
- Ensuring students are kept fully informed of new employment opportunities and careers events held both on and off campus, via regular emailed careers bulletins.

23



**Irma Rekić** (B.Sc.)  
Past Student



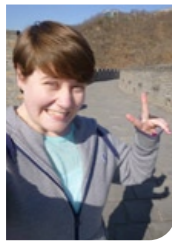
**Gemma Fells** (B.Sc.)  
Past Student  
Organic Tea Industry, India

## So What Do Our Graduates Think?



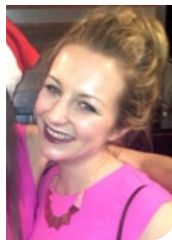
**Michael Natrass** (Geography Graduate 2013)  
PhD student at University College London (UCL).

"Studying at Lancaster provided me with a wide range of knowledge and skills from atmospheric processes to urban issues. My degree combined University based learning with a range of field trips from Lake District rivers, Manchester Regeneration to the socio-economic complexities and contradictions of New York. It was this intellectually stimulating environment across a wide range of topics, combined with the support and encouragement of staff, which made me wish to pursue further study and research into issues of urban cycling infrastructure usage. Even now, the confidence and experience obtained from my time at Lancaster continues to inform my current studies."



**Stacey Tideswell** (Geography Graduate 2013)  
Currently working as an English Teacher in Changsha, Hunan, China.

"Studying geography at Lancaster University was a great stepping stone, both professionally and personally. The variety of modules offered, and the freedom to choose and tailor your degree to study the things that interested you was one of the best things, and what set Lancaster apart from others for me. I currently work overseas as a teacher, and I feel that studying Geography really helped prepare me for this. Undertaking the field trip module to Tunisia sparked my desire to travel, and see the world, but not through a tourism perspective. Throughout my degree programme, I was encouraged and supported by the department as a whole. I found my feet at Lancaster, helping me change from the shy girl I was, into the teacher I am today. I will always remember the university with a warm glow."



**Ellen Talbot** (Geography Graduate 2013)  
Intelligent Transport Systems (ITS) Consultant, Transportation, Atkins Global.

"BA Human Geography at Lancaster was the solid grounding I needed to ensure I had all the skills I needed to pursue my chosen career. Strong analytical skills, coupled with GIS, Infrastructure and Globalisation modules all provided me with an understanding of our changing cities in a way that I use every day now when planning and designing new road structures and technologies. The quality of teaching at Lancaster is excellent and I always felt fully supported. Field trips to Tunisia and New York were enriching experiences and a lot of fun! I wouldn't have changed anything about my time at Lancaster."



**Lucy Wooldridge** (Geography Graduate 2013)  
Municipal Development Executive, SITA UK (Suez Environment).

"I had a brilliant time at university studying Geography. The vast choice of modules meant you could adapt your degree to your interests, mine being the interaction between humans and the environment. As part of my degree I studied at the University of Colorado, Boulder, which was an absolutely fantastic experience which enabled me to gain in confidence and develop skills while also enhancing future career prospects. I started with SITA UK on a graduate scheme in the Logistics Division immediately after graduation and felt I was able to easily adapt to working life after working to deadlines at university and managing different projects alongside each other. In my current role I work as part of a team developing existing business and looking to secure new opportunities for the company in the public sector. This requires me to analyse and critique documents and respond coherently and concisely, all skills I developed through university coursework. Studying geography at Lancaster University has ultimately provided me with the skills to forge a successful career path."



**Mike Stainsby** (Geography Graduate 2012)  
Intern at the World Glacier Monitoring Service, Switzerland.

"Studying at Lancaster has not only developed my geographical skills and breadth of knowledge, but has also provided me with numerous experiences that have helped me grow as an individual and so make me more employable. My undergraduate degree took me from the stunning glacial landscapes of southern Iceland and the Swiss Alps to the bustling metropolis that is New York City. BSc Geography is an intellectually challenging and rewarding course which undoubtedly paved the way for me to gain an internship with the World Glacier Monitoring Service, Switzerland. Lancaster Geography offers great facilities, opportunity for travel and an excellent standard of teaching. If offered, I would most certainly do it all over again!"



**Daniel Sayle** (Geography Graduate 2012)  
Working Towards a PhD.

"Completing my Geography degree at Lancaster has been a great experience! The first year provided me with comprehensive knowledge in human and physical geography that really prepared me for the highlight of my degree that was studying abroad in Colorado. While there I worked for NASA and other world leading institutes and I got to ski in the Rocky Mountains almost every weekend. My final year has allowed me to study topics I enjoy in real depth and provided opportunities to do field work in northern Spain. Post-graduation, my degree has equipped me with the skills to gain a real edge in the job market which is as important as ever."



**Helen Hollingworth** (Geography Graduate 2011)  
Northern PowerGrid, UK.

"What attracted me to geography at Lancaster was the wide range of opportunities on offer.

I was lucky enough to take part in a year abroad in Australia, which looked fantastic on my CV to potential employers. The wide range of modules on offer allowed me to tailor the course to what I enjoyed most and develop skills valued by employers including time management, independent working and some more specialist skills such as geographical information systems and working in labs.

I am now employed by Northern PowerGrid an electricity distribution company. My role includes liaising with landowners, the environment agency and local authorities to ensure that the lights are kept on. The skills I've learnt throughout my degree have played a pivotal role in me obtaining employment with me using them on a daily basis."



**Jemma Fells** (Geography Graduate 2010)  
Organic Tea Industry, India.

"My degree from Lancaster has equipped me with many skills, but mostly I feel it brought out my talents and passion for the subject. My passion for social and environmental issues was built upon with relevant knowledge and skills to give me confidence to use it. Since completing my degree I have been working at an organic and fair-trade tea estate in India, where a sustainable model for the future is being built. I feel privileged to be involved in projects like this, seeing what I studied happening in real life is really inspiring. The staff in the environment centre really helped me develop a keen sense of what I wanted to achieve with my degree. My dissertation especially has enabled me to talk to people in the areas that I am interested in working in."



## Lancaster University Research for Industrial Solutions: You and the World Beyond...

*Lancaster Geography is connecting university research to external environmental organisations and forging ahead in applying cutting edge research to some of the most pressing environmental issues around the World today.*

Lancaster Environment Centre is unusual in that it has a dedicated team working on creating partnerships with enterprise & business. The team specialises in building collaborations between the university and business and government organisations which support the research and teaching of the Environment Centre. These external interactions provide tangible benefits. Companies access leading edge data and understanding, the university is presented with interesting new projects and students apply their skills and learning to current pressing challenges.

there are opportunities for students to undertake this research as part of a work placement.

### **Project: Subsistence Farming in Uganda**

Michelle Clark worked alongside 'Nile Teas (Uganda) Ltd' to assess the impacts of recent climate change in rural Uganda. The aim was to promote sustainable production of organic crop Hibiscus Sabdariffa for the East African market, whilst improving food and income security through knowledge exchange and diversification.

### **Project: Marketing Sustainable Textiles**

This project, undertaken by Luci Duncalf, addressed market forces governing the use of sustainable textiles in the household. Market research undertaken alongside Bamboo Textiles Ltd, identified barriers and motivations to eco-friendly product use and was finally fed into policy recommendations for the company.



### **Studying Enterprise for the Environment**

Our second and third year undergraduate module 'Enterprise for the environment' aims to provide students with an opportunity to learn about the role of the environment as a driving force for business, innovation and commercialisation.

### **Do Your Dissertation as a Work Placement**

Our students all complete an original piece of research (dissertation) – as a part of their Geography degree. Through our Enterprise and Business Partnerships unit,



Trip to the Lake District



Exec. members at the 'colouring in' social

## Welcome from the **SLUGS** (The Society of Lancaster University Geography Students)



The Society of Lancaster University Geography Students aims to enhance your overall experience at Lancaster, providing an opportunity to get involved with a student society whilst making friends with others from your course.

We organise a diverse range of academic and non-academic activities throughout the year giving our members the chance to relax and enjoy themselves and also further develop their interest in geography.

SLUGS encourage non-academic staff-student interactions through the events we organise such as the Christmas meal and the end of year LEC formal.

Examples of previous events include walks to Malham Cove and the Lake District; guest lectures; formal meals; and a wide range of socials including the 'colouring in' social and 'SLUGS Go Green'.

As a member of the SLUGS society, you will be free to attend as many social events as you wish, hopefully making many new friends and creating lasting memories of Lancaster.



Christmas meal with staff and students



*We look forward to meeting you all, and welcoming you to SLUGS.*

# Admissions Information

Typical requirements for entry to our Geography degree programmes:

## Three Year Programmes

BSc Geography (UCAS code: F800)\*, BA Geography (UCAS code: L700)\* BA Human Geography (UCAS code: L720), BSc Physical Geography (UCAS code: F840) and BSc Environmental Change and Sustainable Development (UCAS code F755):

- A level grades **AAB**.
- Scottish Higher grades **ABBBB**
- International Baccalaureate **35pts**;  
European Baccalaureate **81%**

BSc Physical Geography (Study Abroad) with a Year in Australia (UCAS code: F847); BSc/BA Geography (North America) UCAS code: F802/L701)\*:

- A levels **AAA**
- Scottish Higher grades **AAABB**
- International Baccalaureate **36pts**;  
European Baccalaureate **84%**

## Four Year Programmes

M.Sci. Geography (Professional Experience) (UCAS code 4R60), M.Sci. Geography (UCAS code 4R61), M.Sci. Geography (North America) (UCAS code 4R62), M.Sci. Physical Geography (UCAS code 4R63), M.Sci. Physical Geography (Australasia) (UCAS code 4R64), M.Arts Geography (UCAS code L702) and M.Arts Geography (North America) (UCAS code L703).

- A level grades **AAA**
- Scottish Higher grades **AAABB**
- International Baccalaureate **36pts**;  
European Baccalaureate **84%**

## Joint degrees

BA Economics and Geography (UCAS code: LL71):

- A level grades **AAB** Requires Geography or a cognate subject.

BA French/German/Spanish Studies and Geography (UCAS codes: LR71, LR72, LR74):

- A level grades **AAB** Requires Geography or a cognate subject. Must include the modern language unless this is to be studied from beginners level.

\* = Degrees requiring A level Geography

## Applications

Applications for all of our undergraduate degree programmes must be made through the Universities and Colleges Admissions Service (UCAS), using the online service via: <http://www.ucas.ac.uk>

## Mature and overseas applicants

We welcome applications from mature or overseas students or those offering relevant subjects such as BTEC, Diplomas or other awards. Your application will be considered individually on its merits and in relation to the University's guidance on equivalence to A levels.

## Tuition Fees and Financial Support

For all undergraduate degree programmes at Lancaster, the tuition fee for 2014 entry is £9000 per year for students from the UK and the European Union (different rates apply to Islands and Overseas students). Please see our University web pages for further information on the financial packages available to you:

[www.lancaster.ac.uk/study/undergraduate/fees-and-funding](http://www.lancaster.ac.uk/study/undergraduate/fees-and-funding)

Details of 2016 fees will be posted on this web site as soon as they are available.

**Note:** For all degree programmes, we also require GCSE passes in English and Mathematics at grade C. Please also note that we do not accept General Studies for any of our degree programmes.

There is no preferred combination of subjects for students wishing to study degree level Geography, as geographical enquiry presents the opportunity to study across the spectrum of physical and social sciences. However, key qualifications are certainly deemed advantageous to specific areas of geographical enquiry. For Physical / environmental Geography, qualifications in Maths, Biology, Chemistry, Physics and Geology, will be helpful. For the Human Geography degrees, courses such as history, economics, sociology, development, law and Religious studies will all help to provide the portfolio of knowledge required to excel in a Geography degree. This list is of course not exclusive, but should you have any concerns regarding the suitability of your A-level subjects for studying Geography at Lancaster, please do not hesitate to contact us.

# Bursaries & Scholarships



*Lancaster University has an extensive programme of financial support and funding for students that consists of:*

## Bursaries for life, living and learning

All students from the UK, with a household income of less than £42,600, will be awarded a **Lancaster Bursary of £1,000** for each year of their studies.

Students from the UK eligible for a bursary package will also be awarded our Academic Scholarship and/or Access Scholarship if they meet the criteria.

For up-to-date details of tuition fees, financial support, further guidance and information, please look at the Lancaster University Undergraduate Fees & Finance web page.

*For 2016 entry, our Excellence Scholarship will form part of the Unconditional Offer Scheme for full time UK applicants with outstanding academic profiles. Further information is available at the Lancaster University Undergraduate Fees & Finance web page.*

*Lancaster University's priority is to support every student to make the most of their life and education. 400 students each year will be entitled to bursaries and/or scholarships to help them with the cost of fees and/or living expenses.*

## Scholarships recognising academic talent

Our **Academic Scholarship** is designed to reward the hard work and natural ability of full-time UK and Islands students applying to study with us regardless of their household income. Students achieving: A\*, A\*, A in their A-level examinations (or equivalent academic qualifications), and who place Lancaster as their firm choice, will be awarded a **£2,000** Lancaster Scholarship during their first year of undergraduate studies.

Our **Access Scholarship** is to support UK students with household incomes of less than £42,600, who achieve excellent A level grades of A\*, A, A, or the equivalent academic qualifications. They will be awarded a **£1,000** Access Scholarship for each year of their studies. In addition, students from household incomes of less than £42,600 who achieve higher entry grades of A\*, A\*, A (or equivalent academic qualifications), will also be awarded our £2,000 Academic Scholarship in their first year of study. Continuation of the Access Scholarship is subject to satisfactory academic progression.

The Lancaster University Undergraduate Fees & Finance web page can be found at: [www.lancaster.ac.uk/study/undergraduate/fees-and-funding](http://www.lancaster.ac.uk/study/undergraduate/fees-and-funding)

**At the time of printing, 2016/17 bursaries, scholarships and access agreements remain to be confirmed and may be subject to change.**



## University Life in Lancaster

Lancaster is one of the top UK universities. It offers first class teaching and research; it is friendly and flexible, with a great social life. Personal supervision in departments and the collegiate system combine to provide students with the best possible opportunity to achieve their potential. Staff-student ratios are significantly better at Lancaster University than the national average and small group teaching is an important feature of our educational approach. The cost of University accommodation (and general living costs) at Lancaster is among the lowest in the country.

The University has over 12,000 students from more than 120 countries and over 2,500 staff. All our activities are based on a single campus. The University campus is three miles from Lancaster city centre and is like a small town, with its own Health Centre (including doctors and dentists surgeries and a pharmacy), shops, banks and a post office as well as restaurants, fast food outlets and bars. The Campus has excellent sporting facilities which include an eight lane 25 metre indoor swimming pool, badminton, squash and tennis courts, a floodlit outdoor pitch, a sauna and solarium, weight training and fitness rooms.

The social life of the university revolves around eight undergraduate and one postgraduate colleges, each with its own distinct identity. Every student and member of staff belongs to a college, and each student is allocated a personal tutor from his or her college. Each college has its own bar, common rooms and residences. Colleges are run by elected student committees and each college has a programme of social events including Christmas Dinners, shopping trips, visits to the Lake District and various nightclubs in the North West. Inter-college rivalry is reflected through a series of annual sporting events.

All students at Lancaster are automatically members of the Lancaster University Students' Union (LUSU).

The Union deals with welfare matters and represents students on University committees. The Union organises entertainment on campus and at its social centre and nightclub, The Sugar House, in the centre of the city. Over 60 clubs and societies are affiliated to LUSU which cater for sporting, leisure, political, outdoor, religious, cultural and educational pursuits. The Union also runs shops on the Bailrigg campus, selling stationery, gifts, non-prescription medication and second-hand books.



### Accommodation

All residences have kitchen facilities for self-catering. Most college accommodation consists of single study bedrooms. All but a few of the rooms have en-suite bathrooms. A modern communications system throughout campus provides a telephone in every student room (including voicemail) with free cross-campus calls along with a connection point for the University's broadband computer network which delivers ultra-fast Internet access. The majority of first year undergraduates have a room on campus and over half of all undergraduates live in University-owned accommodation in Lancaster and the surrounding area.

## Lancaster and the Local Area



Lancaster Castle and Priory

### By day...

Lancaster is a friendly, bustling city which has all the amenities of a large city without having lost its charm and character. Much in Lancaster is geared to students' needs as it is very much a university town.

You will find all of the major high street retailers plus a number of independent specialist shops catering to the needs of students. The city can be reached in ten minutes by shuttle buses that run every five minutes from the university.

A short walk eastward from the University campus finds you in the Forest of Bowland Area of Outstanding Natural Beauty. The central part of Bowland is dominated by heather moorland which covers the wide expanses of sweeping fells. This contrasts with the verdant lowland landscapes around the periphery and the wooded valleys of the rivers Ribble, Hodder and Wyre. This and the easy access to local coastal environments, the National Parks of the Lake District and Yorkshire Dales means Lancaster is within reach of prime fieldwork sites for our physical geographers. Outdoor enthusiasts will find a range of superb locations for walking, climbing, yachting and rowing.

### By night...

Favourite student pubs in Lancaster include: The Friary, Varsity, Fibber McGee's, Wetherspoons, The Water Witch, Keystones, Merchants, The Sun, Mood, and The Lounge. Favourite student clubs in Lancaster include: Toast, Liquid, Revolution and The Sugarhouse - the Student Union run club (packed every weekend). Lovers of theatre and the arts are well catered for in Lancaster. Professional performances are staged at the Dukes Playhouse, the Nuffield Theatre (on the University campus) and the Grand Theatre. Lancaster hosts several



The Sugarhouse

festivals throughout the year. 'Litfest' is one of the most popular, regularly attracting famous novelists and poets.

You can find out more about Lancaster and the local area on the University web site: [www.lancaster.ac.uk/explore](http://www.lancaster.ac.uk/explore)



Market Street, Lancaster

# Visiting Us

## Visiting the University

Lancaster is very well served by road, rail and air networks (see map). Annual Open Days take place each summer for anyone thinking of applying to Lancaster. These are an excellent opportunity for students considering Higher Education entry to visit Lancaster and find out about degree programmes, talk to Geography staff and go on a campus tour. Alternatively, Campus Visits take place on the first Wednesday of every month, apart from August. There are tours of the University and its facilities and you will see student accommodation in a College. If you want to attend an Open Day or would like to join a conducted tour, please visit the University's website to book a place or email:- [visitus@lancaster.ac.uk](mailto:visitus@lancaster.ac.uk) Telephone enquiries can be made to UK Student Recruitment and Outreach Team on:- **01524 593724**.

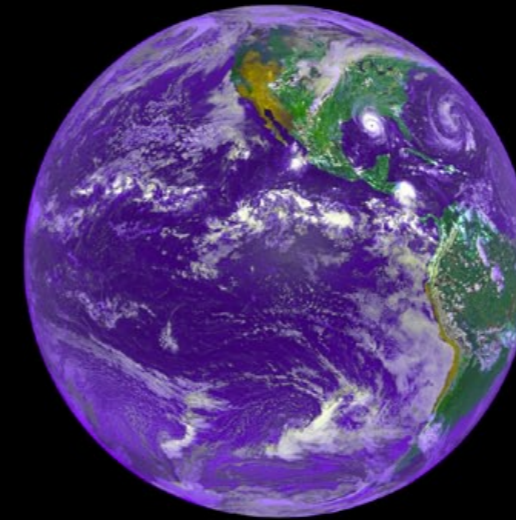
If you would like to visit the University informally, you are welcome to do so at any time. You do not have to advise us of your visit; the campus is like a small town and you are welcome to use the shops, Sports Centre, bars and restaurants and to visit the Library. Please contact the Geography admissions secretary for a map of the University campus.

## Visiting Geography at Lancaster

We have Applicant Visit Days for potential Lancaster students. These are generally held in February and March and are designed to allow you to get a taste of being an undergraduate in Geography at Lancaster. You will be able to talk to Admissions and subject tutors, participate in some geography activities, join a conducted tour of the campus, and find out about the first-rate facilities at Lancaster. Parents are welcome to come to these Visit Days. While here, parents can attend a special question and answer session to discuss issues such as accommodation, finance, life on campus, and are taken on their own campus tour.

### Approximate Travel Times (By Train)

Lancaster — London	2.5 hours
Lancaster — Liverpool	1.5 hours
Lancaster — Manchester	1 hour



## Further Information and Contacts

Further information about the University in general, accommodation or the city of Lancaster may be found in the University's Undergraduate Prospectus. Paper copies are available via:

[www.lancaster.ac.uk/prospectus](http://www.lancaster.ac.uk/prospectus)

The Lancaster University web site:

[www.lancaster.ac.uk](http://www.lancaster.ac.uk)

## Contacting the Geography Admissions Staff:

For all degree programmes offered in Geography contact:  
 The Geography Undergraduate Admissions Secretary  
 Tel: 01524 510249  
 Fax: 01524 510269  
 Email: [lec.ug@lancaster.ac.uk](mailto:lec.ug@lancaster.ac.uk)

## Postal address:

Lancaster Environment Centre  
 Lancaster University  
 Farrer Avenue  
 Lancaster  
 LA1 4YQ

The Environment Centre web site

[www.lancaster.ac.uk/lec](http://www.lancaster.ac.uk/lec)

The Geography web site:

[www.lancaster.ac.uk/lec/undergraduate](http://www.lancaster.ac.uk/lec/undergraduate)

### Image credits:

Many of the photographs in this prospectus were taken during Geography fieldwork - thanks to our students and staff who took these photographs and appear in them. Additional photos and images appear courtesy of: NASA (p.7, and inside back cover); Paul Williams (p.31, top and bottom photographs).

### Disclaimer

The information provided in this brochure is correct at the time of publication (July 2015) but this may be subject to change as we constantly review and improve our degree programmes. This brochure does not form part of any contract between any person and the University of Lancaster.



## Geography Undergraduate Prospectus

